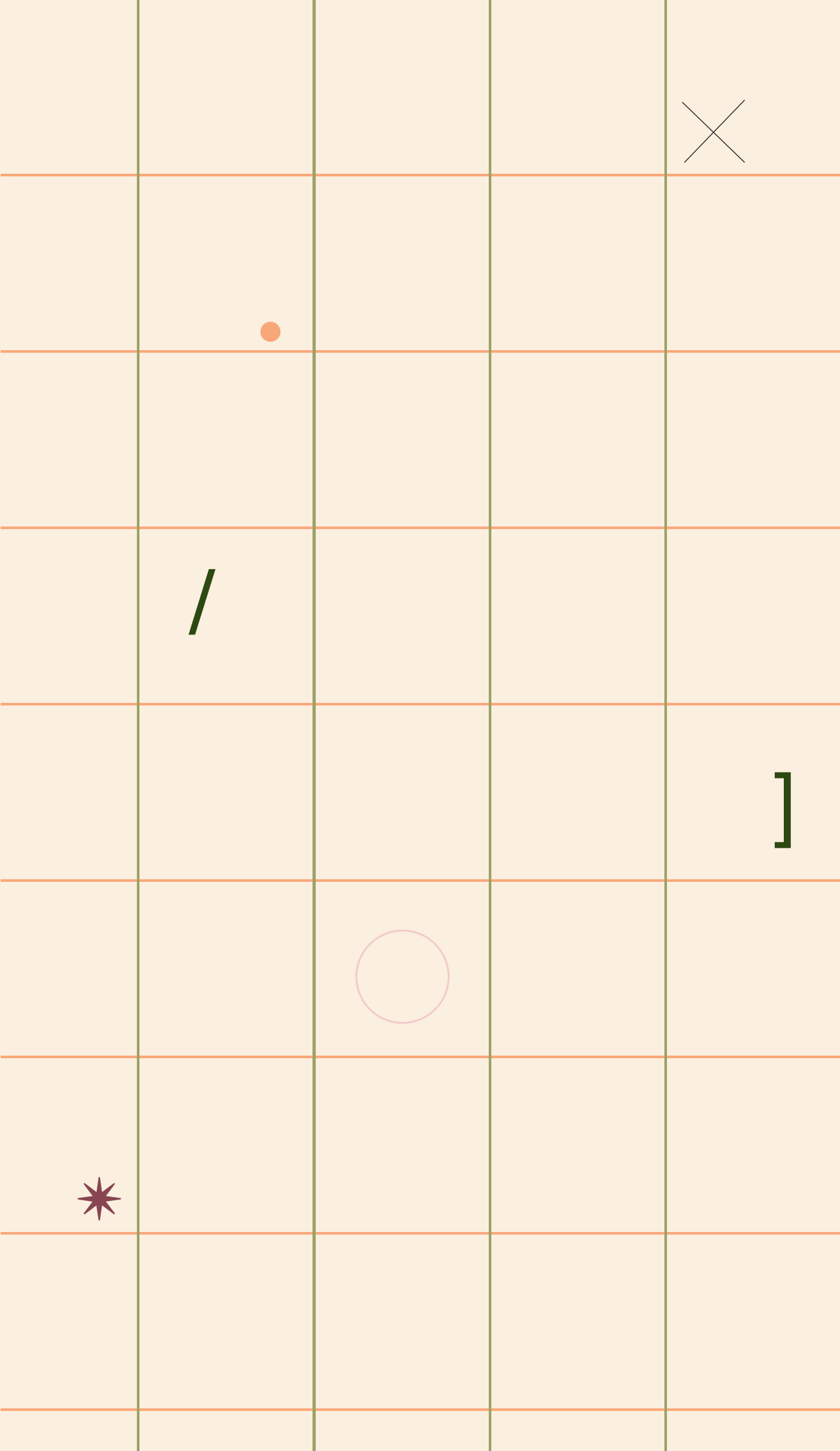




clarisse queiroz
portfolio

architecture urbanism **design**



contents

list of projects working for private companies

professional experience

- 2021 **Kaira Loro competition - women's house**
- 2015 **sustainability house in Campinas**
- 2020 **land regularization at Conjunto Palmeiras**
- 2016 **kindergarden school in Brasília**
- 2020 **bar cart Rondon**
- 2018 **chalets for community tourism in Cumbe**
- 2019 **bike parking installation manual**
- 2019 **house on 18th street**

academic experience

- 2018 **graduation project - prelude**
- 2013 **public housing**
- 2014 **parckfarm - afterlife in Brussels**
- 2015 **Serrinha ecological plaza**

list of projects working for private companies*

Due to confidentiality agreements, the projects listed below cannot have their technical drawings and schematics shared in this portfolio.

PROJECTS

working as a consultant architect at NACTO

2019

Consulting architect for NACTO (Non-profit organization of New York), working with street design interventions to promote sustainable mobility and road safety for the City Hall of Fortaleza - Brazil.

Requalification of Jacarey lake

drawings, collages and presentation

Requalification (calm traffic area) of the Pessoa Anta Avenue

drawings, collages and presentation

Board game development as a participatory design method/tool to be implemented in peripheral areas

physical prototype development

EXECUTIVE LEVEL PROJECTS

working as an architect at ARCHITECTUS S/S

2020

Renovation of the "Professor Hélio Fraga Reference Center - FIOCRUZ"

Rio de Janeiro - Rio de Janeiro - Brazil

Renovation of the "Sementeira Park" (396019 m²)

Aracaju - Sergipe - Brazil

Renovation of the "UFPA Hospital Complex - CH UFPA" (28722 m²)

Belém - Pará - Brazil

Renovation of the "Professor Alberto Antunes University Hospital - HUPAA" (35011 m²)

Maceió - Alagoas - Brazil

Renovation of the "UFC Hospital Complex - CH UFC" (13075 m²)

Fortaleza - Ceará - Brazil

2021

Renovation of the "University Hospital of Brasília - HUB" (50015 m²)

Brasília - Distrito Federal - Brazil

Renovation of the "Clinical Hospital of Goiás- HC UFC" (73657 m²)

Goiânia - Goiás - Brazil

Renovation of the "UFMA University Hospital - CH UFMA" (46283 m²)

São Luiz - Maranhão - Brazil

Renovation of the "Professor Edgar Santos University Hospital - HUPES" (45575 m²)

Salvador - Bahia - Brazil

New Building of the "University Hospital of Lagarto - HUL" (5925 m²)

Lagarto - Sergipe - Brazil

Renovation of the "Clinical Hospital of UFPE - HC UFPE" (63438 m²)

Recife - Pernambuco - Brazil

EXECUTIVE LEVEL PROJECTS

working as an architect at ARCHITECTS OFFICE SP

2021

Essenza Paiva residential complex (4567 m²)

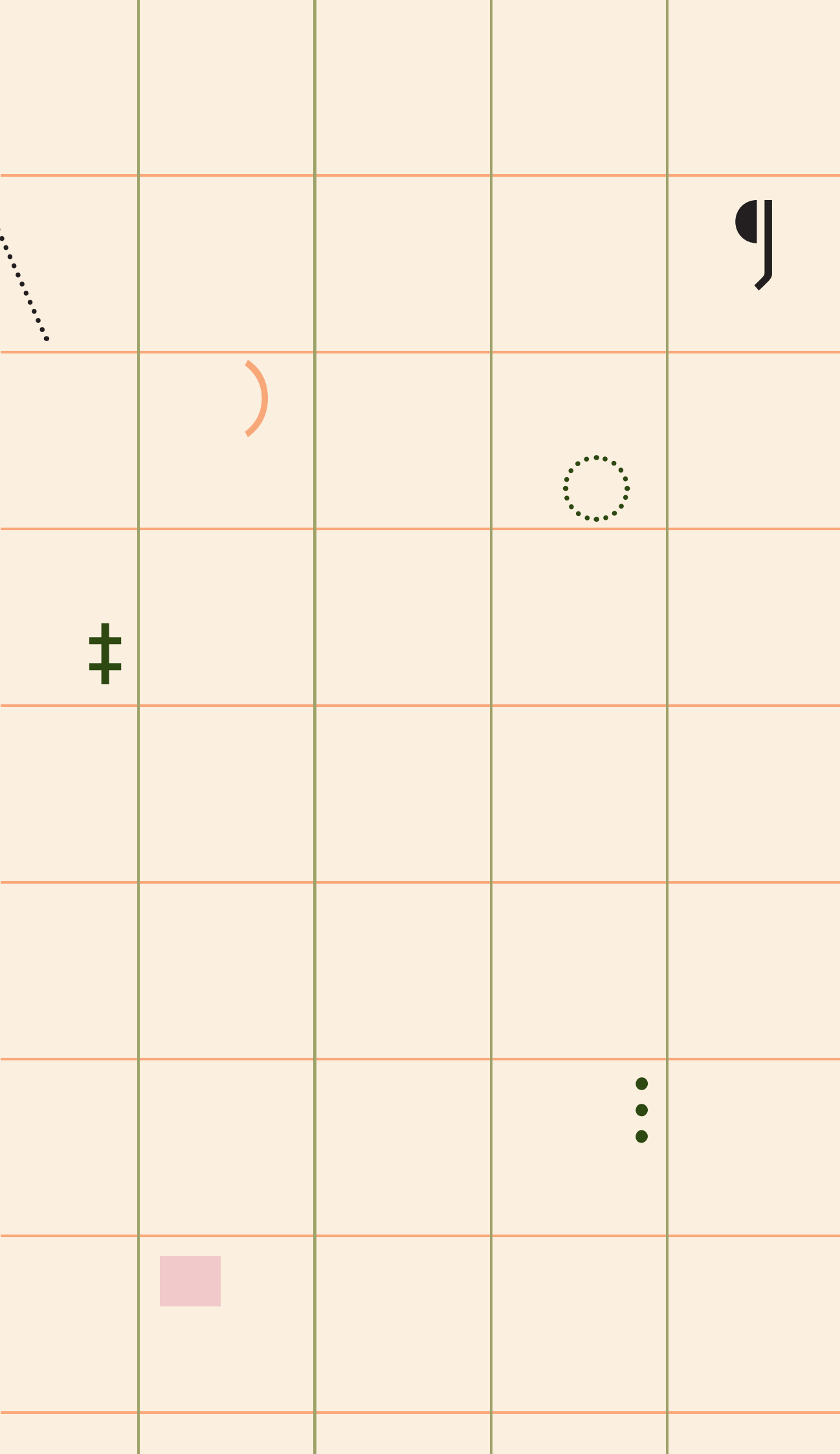
Praia do Paiva - Pernambuco - Brazil

Bossa residential building (4330 m²)

Recife - Pernambuco - Brazil

HAL residential building (2580m²)

Praia Brava - Santa Catarina - Brazil



.....

professional experience

architecture as mediation

Kaira Loro competition - women's house

YEAR: 2021
LOCATION: Baghere, Senegal
TYPE: Collaborative work / group competition

Project developed with Yuka Ogawa, Lucas Costa, Frederico Leite, Júlia Brito
autocad, sketchup, v-ray, photoshop, indesign, illustrator

CONTRIBUTION: concept, 3d modeling, renders (images),
graphic design, Choices & Limits schemes

The objective of the contest was to reflect on a “Women's House”, in the municipality of Baghere - Senegal, whose conception would seek to promote gender equality as an essential characteristic of rural development, through a symbolic-ecological architecture inspired by local traditions.

This proposal explores the capacity of architectural design as a mediator of collective decision-making processes. It is a method to be applied as a workshop. Female empowerment is a mechanism for development, but is also a goal in itself, as it enables women to make strategic choices about their own lives and communities. Based on this concept of empowerment, we stated our design as a process, dividing it into five steps

1° step - **Wish Poems:** Wish Poems (Henry Sanoff - 1995 and 2001) is a group dynamic in which women must express their needs, feelings and desires regarding the building or environment, verbally or through drawings.

2° step - **Layers:** The architect who will mediate the moment will present to the women the layers of the architectural design using a model of the building's structural module. Materials and methods can be changed and adapted to techniques that they consider most appropriate.

3° step - **Choices & limits:** This step of the workshop will be carried out using a model with five structural modules that define outdoor spaces, also with a model of the site with existing elements. Each module must be collectively defined with a spatial quality compatible with its use.

4° step - **Final adjustments:** The architectural design will be finished by the team of architects, who will make necessary adjustments.

5° - **Construction site:** The last step should be for training all women in the construction techniques of the wooden structural module. Finally, women must self-manage the construction site.

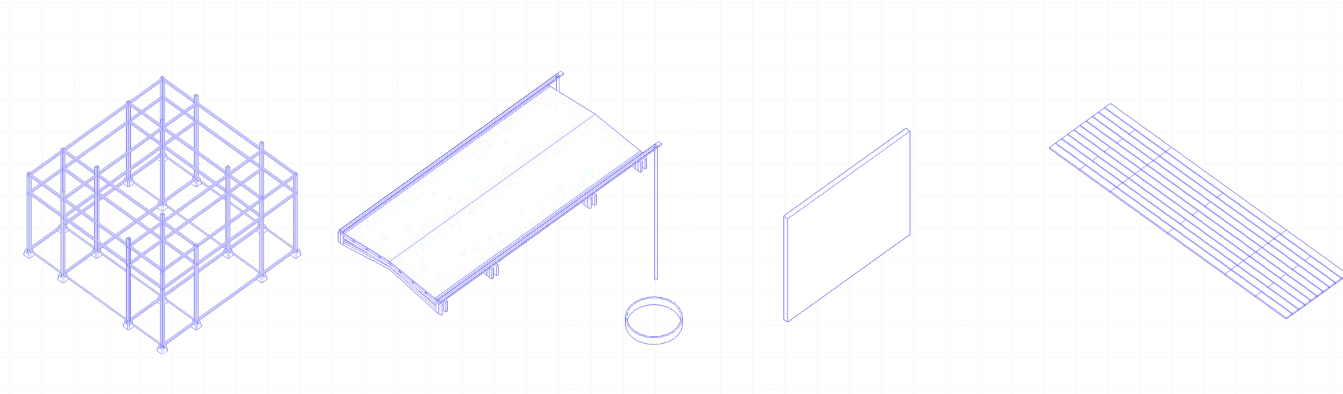


1°- Wish Poems



on site meeting with women and the team responsible for the project

2°- Layers



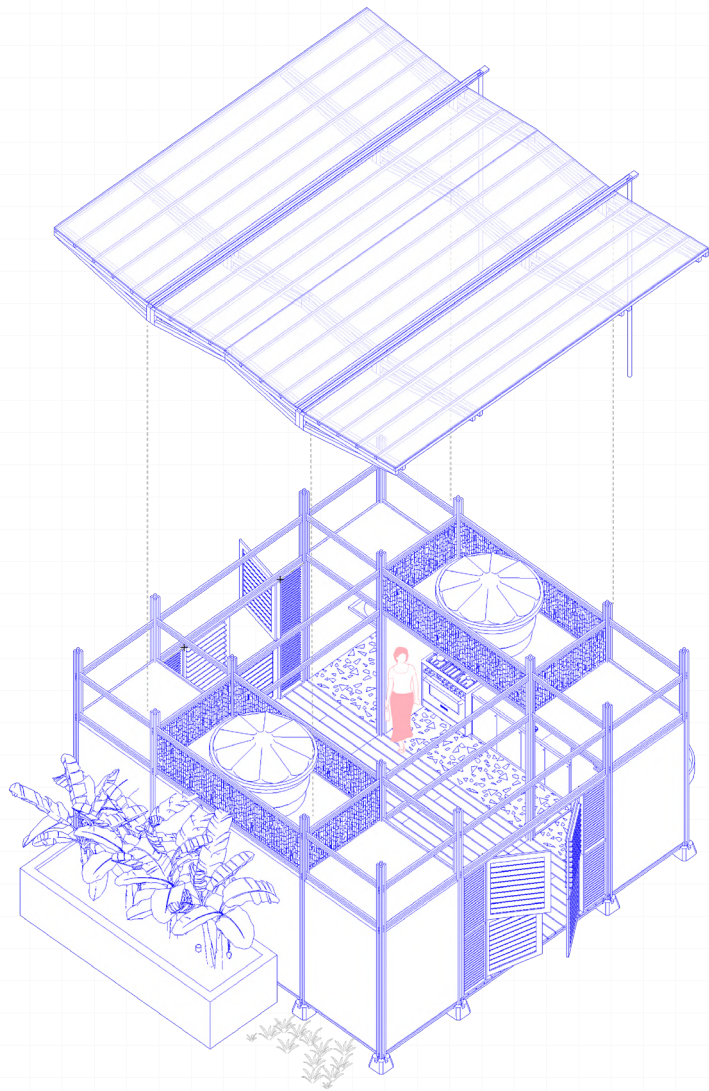
pillars, beams and foundation

coverage, gutter and cistern

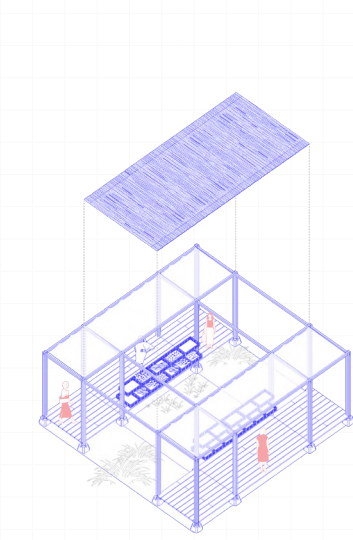
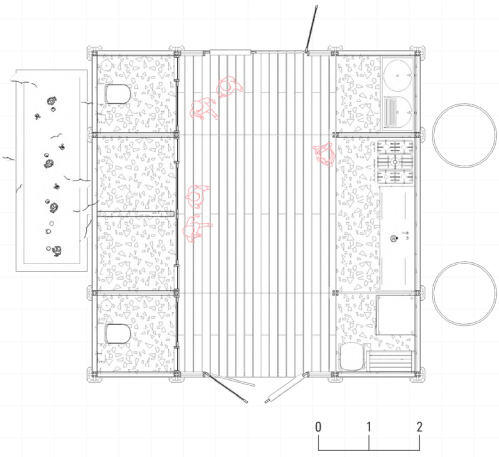
skin

circulation and accesses

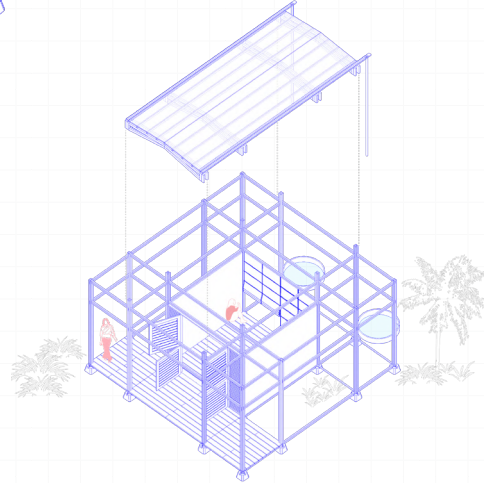
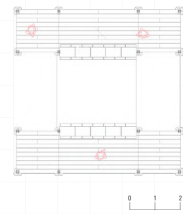
3°- Choices & Limits



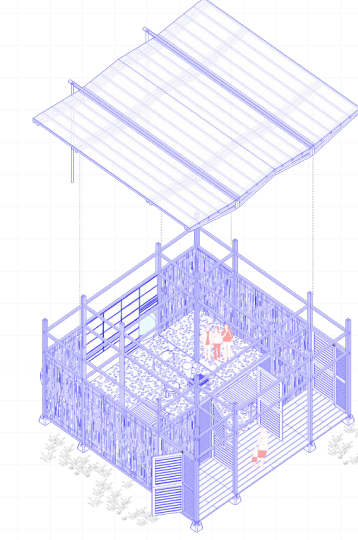
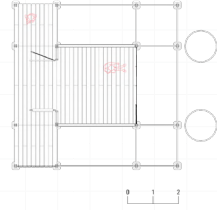
infrastructure module



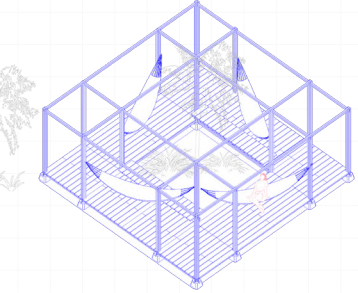
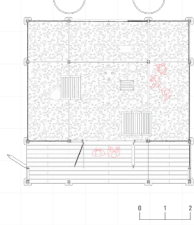
market



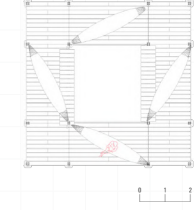
sacred



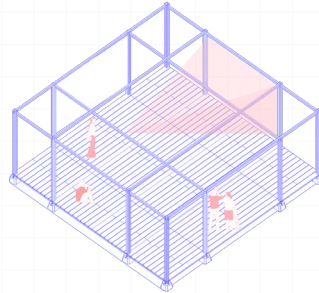
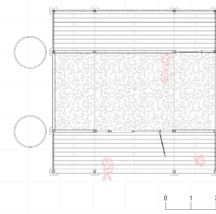
educational



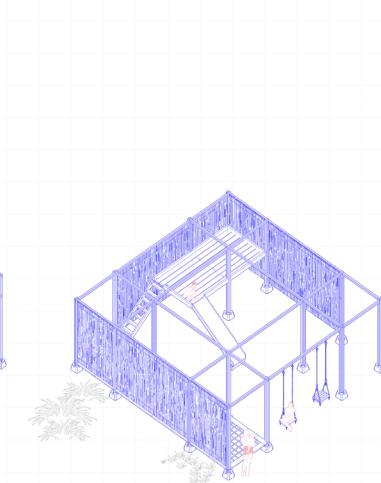
hammocks



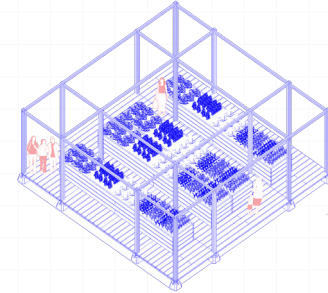
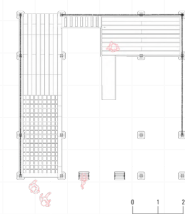
rest



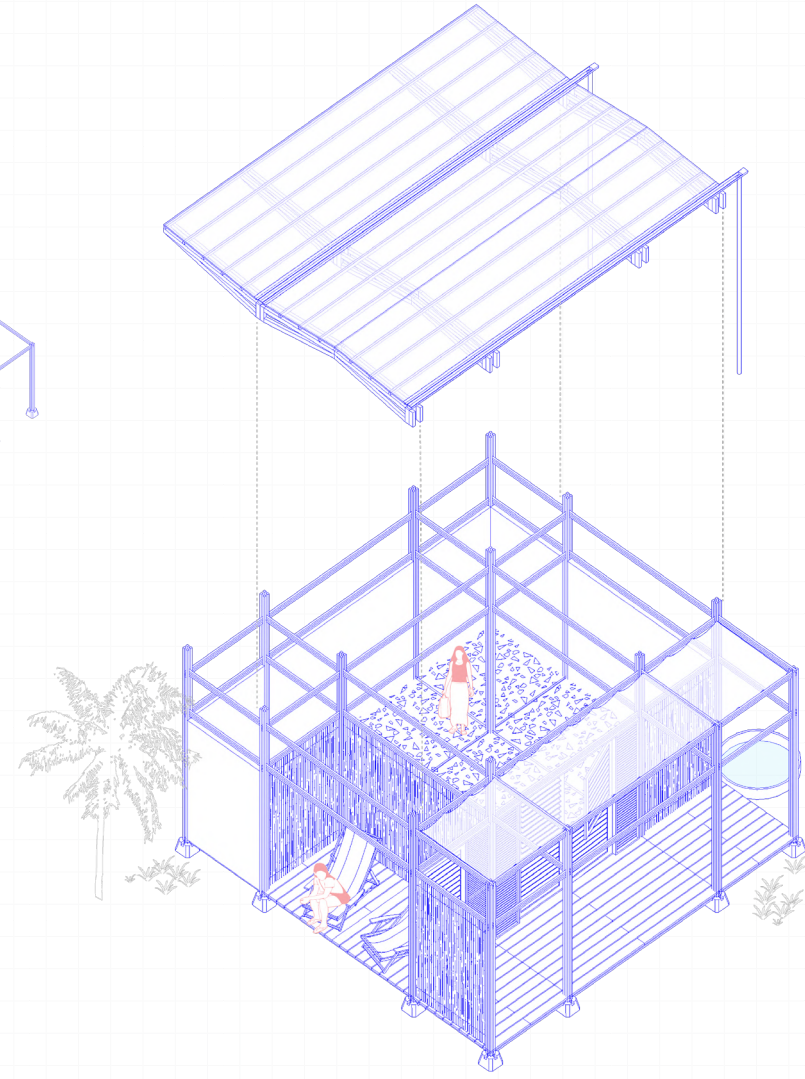
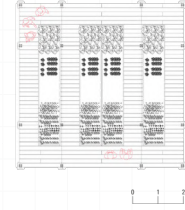
cinema



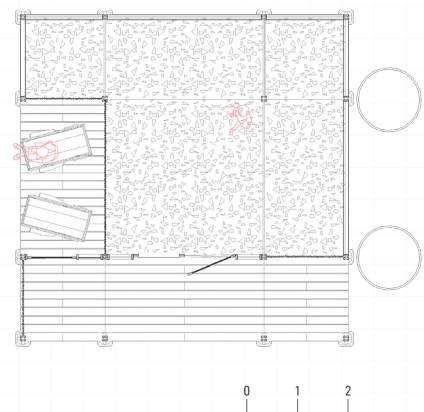
play



garden

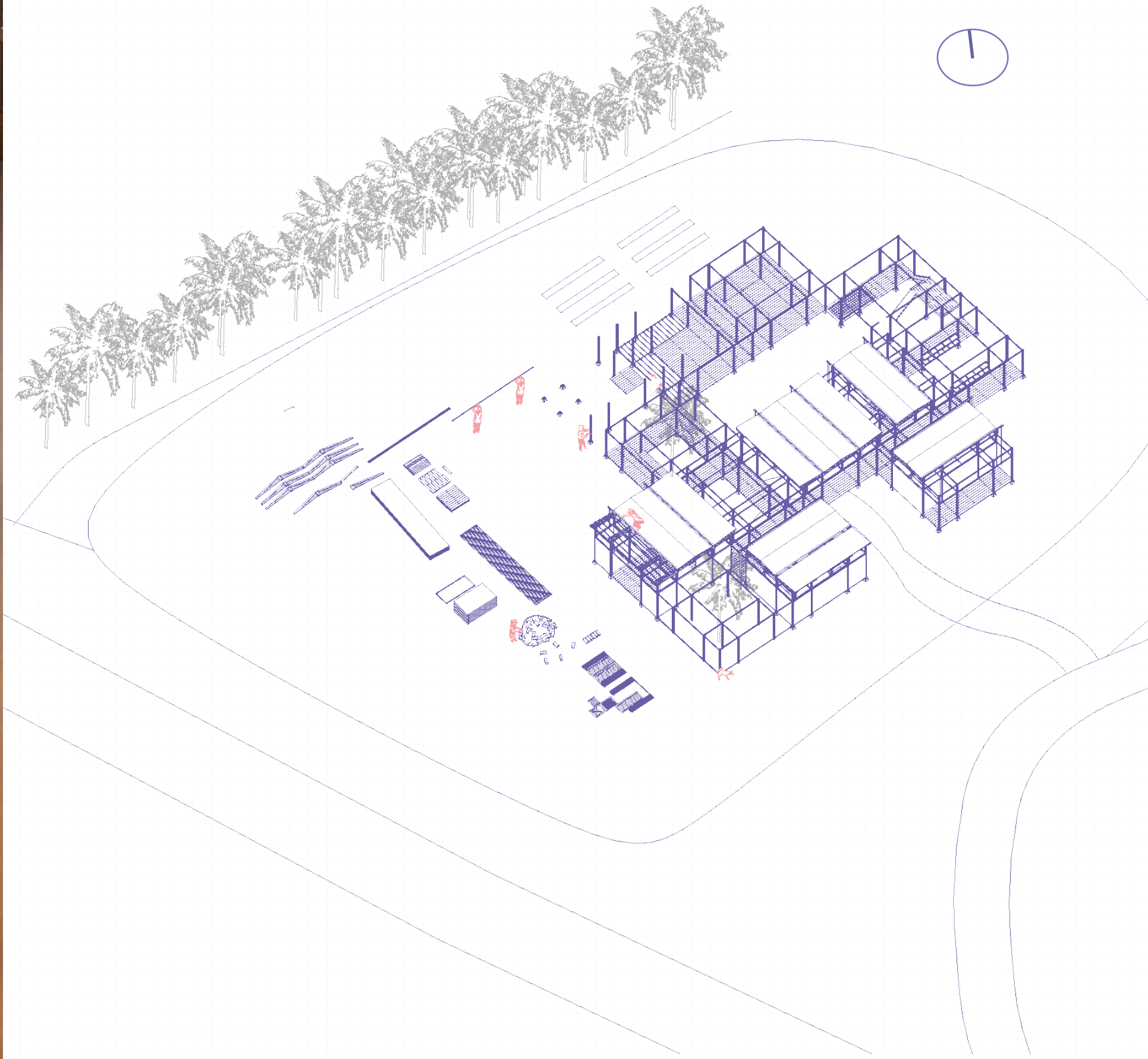


administrative module





5° - Construction site



kindergarden school

Centro de Ensino Infantil Parque do Riacho competition

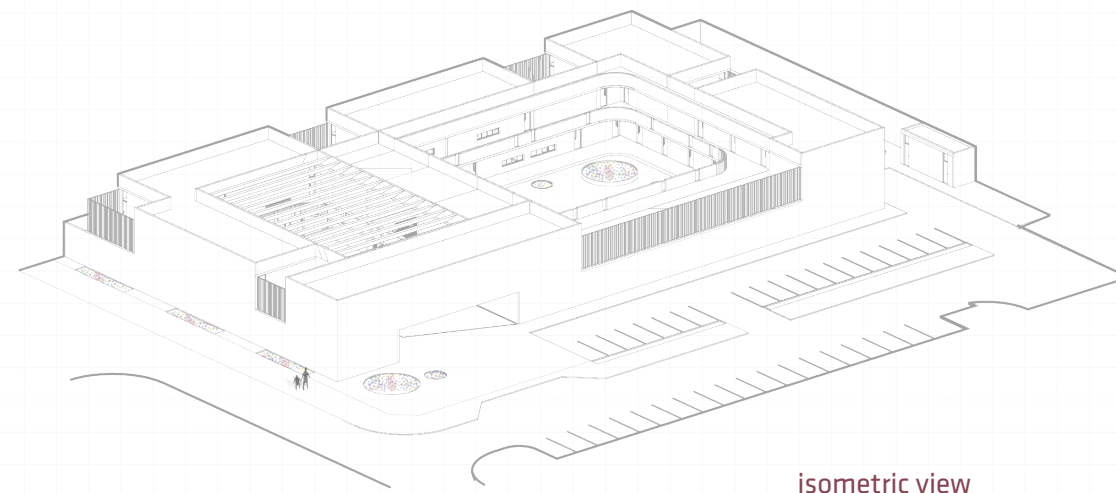
YEAR: 2016
LOCATION: Brasília, Brazil
TYPE: Office-related

Project developed with Rede Arquitetos and Yuka Ogawa
archicad, autocad, v-ray, photoshop, indesign, illustrator

CONTRIBUTION: concept, 3d modeling, graphic design, plants and sections

The project is based on three fundamental issues: the flexibility of its formal structure, its adaptability over time and in different contexts; the character of the created spaces, suitable for children; and its implementation so that the building acts as a mediator between the public and the private spaces.

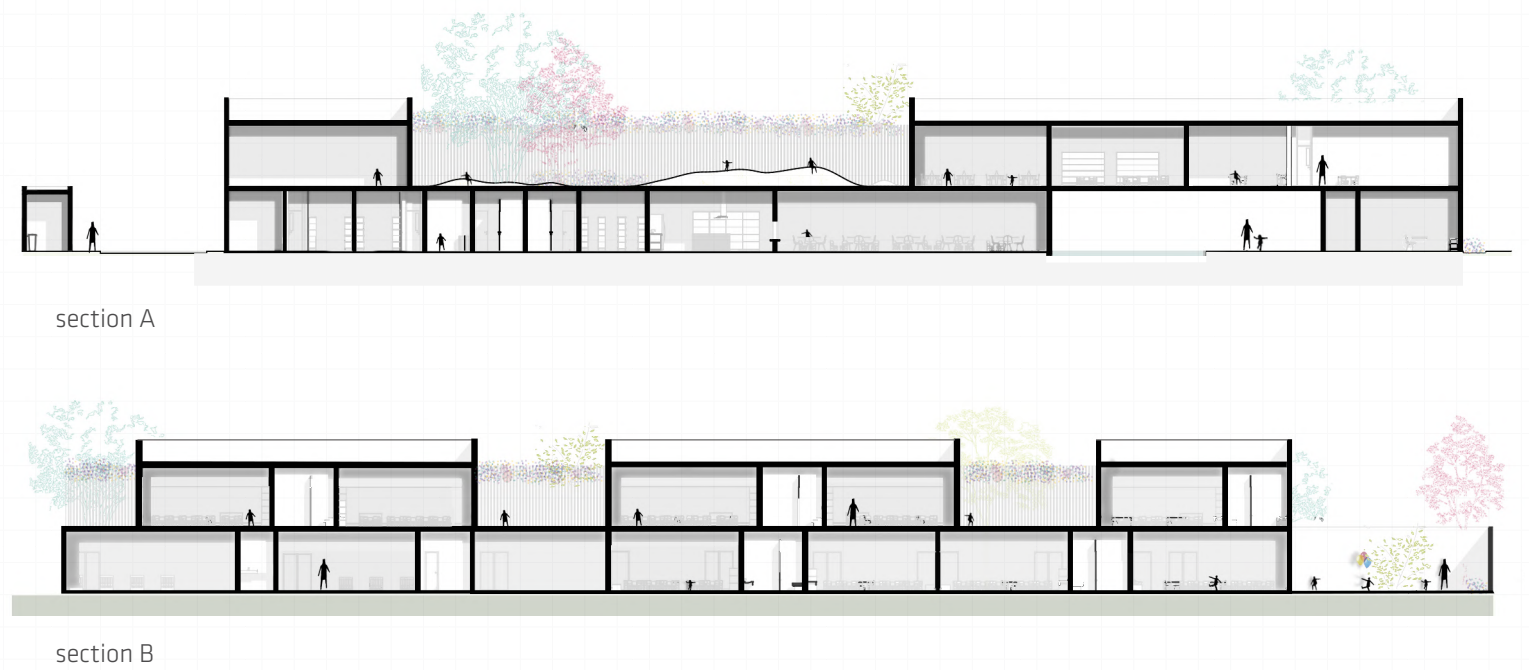
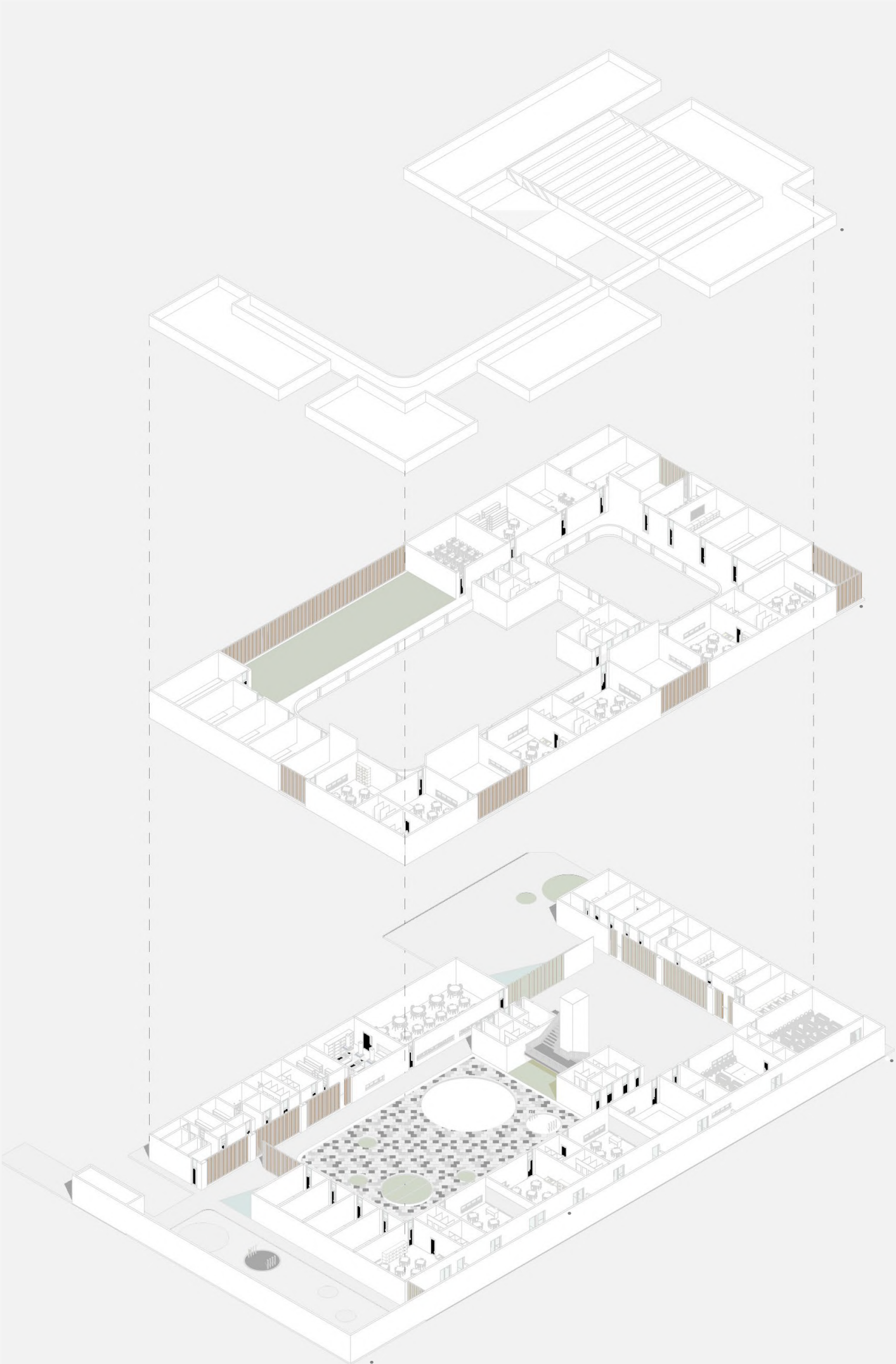
The basic structure was conceived from a 7.20 x 7.20 meters module, which works with variations to accommodate different uses, ensuring the flexibility of layout and allowing design's diversity for its application in lands with different contexts, since, within the square module, it is possible to rearrange the spaces and guarantee the full functioning of the building. This solution also allows for future extensions, since the constitutive logic of the project starts from a base module expandable.



In the organization of space, we focused on ensuring the integration between the division of teaching, administrative sectors, services and common area, but, at the same time protecting the specific activities of each part of the program.

Intending not only to the specific educational function, but also to act as a potential generator of public and open spaces, we purposed to create an indented access space, free with the possibility to gather people and, at the same time, mark the transition between the external public space and the private space of the equipment.





land regularization at C. Palmeiras

an intersectional proposal in partnership with Women in Movement (AMEM)

YEAR: 2020
LOCATION: Fortaleza, Brazil
TYPE: Collaborative work / group competition

Project developed with Thais M., Bruna C., Julia Brito and Gabriela Delgado
autocad, sketchup, photoshop

CONTRIBUTION: Project Leader, financial coordination, field surveys, drawings on autocad, visual identity and graphic design of instagram's page, contact with women and organization of documents, photographic

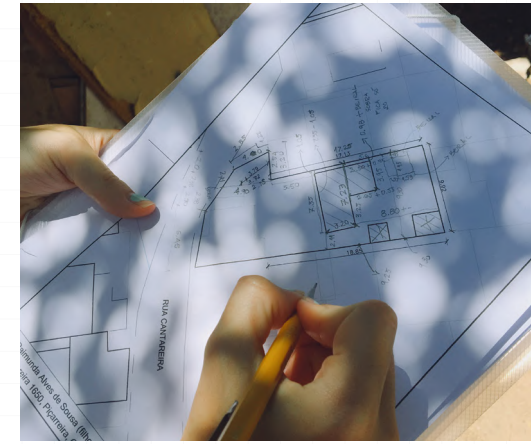
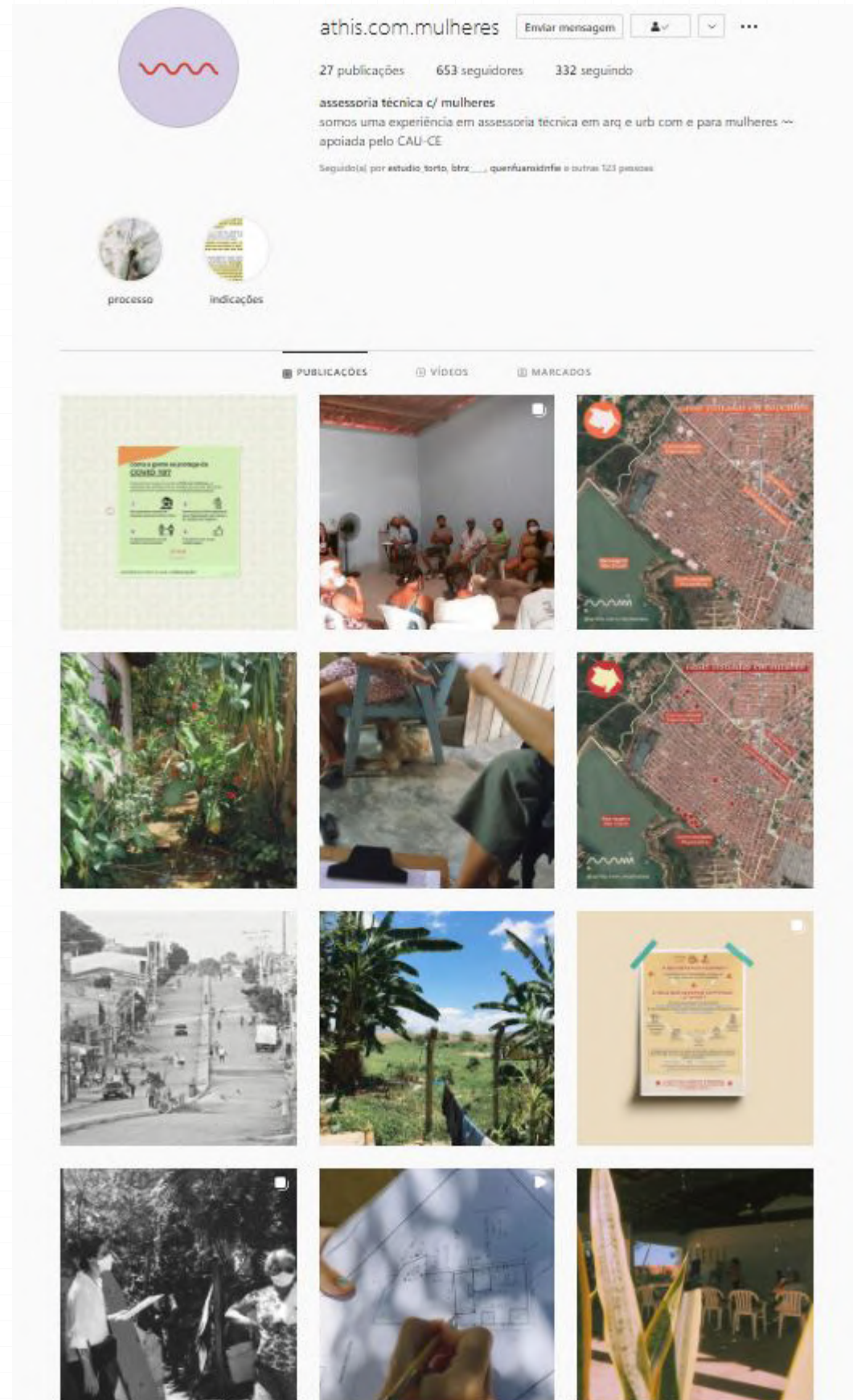
In 2008, the brazilian law nº 11888 was approved, which “ensures low-income families free public technical assistance for the design and construction of social housing”. The law states that as we all must have public access to health services, the population that has an income that hinders or prevents their access to housing through the real estate market also has the right to access architectural and engineering services, in a public and free form.

The Technical Assistance Law for Social Interest Housing (ATHIS) is an integral part of our social right to housing provided in the Brazilian Constitution and must be carried out through financial support from the Union transferred to the states and municipalities.

In order to encourage ATHIS, the Ceará Council of Architecture and Urbanism (CAU-CE) launched in 2020 an institutional support notice, allocating resources for the service of architecture professionals in two categories of projects: Housing Improvements and Land regularization.

We were the winning proposal of this notice in the Land Regularization category, entitled “Land Regularization in Conjunto Palmeiras: an intersectional proposal in partnership with Women in Movement (AMEM)”.

“ATHIS with women” is a group of autonomous architects that seeks to exercise an **intersectional theoretical-methodological approach** – that is, one that understands the importance of thinking about the articulation of indicators such as **gender, race and class** in social studies (DAVIS, 1981; HOOKS, 1992; CRENSHAW, 1996). In partnership with the *Associação das Mulheres em Movimento (AMEM) of Conjunto Palmeiras*, we drew up a proposal to advise on a broad basis the land title regularization for a group of 40 houses inhabited by families headed by black women and single mothers, in the communities of Conjunto Palmeiras, in the periphery area of Fortaleza.



sustainability house

Casa da Sustentabilidade competition

YEAR: 2015/2016
LOCATION: Campinas, Brazil
TYPE: Office-related

Project developed with Rede Arquitetos
archicad, v-ray, photoshop, indesign, illustrator

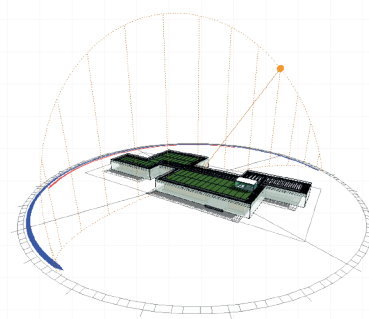
CONTRIBUTION: concept, 3d modeling, graphic design, plants and sections, metal panels

The objective of the contest was to select architectural proposals for the construction of a public facility called “Sustainability House”, to be installed in the Municipal Park Taquaral, in the city of Campinas, state of São Paulo.

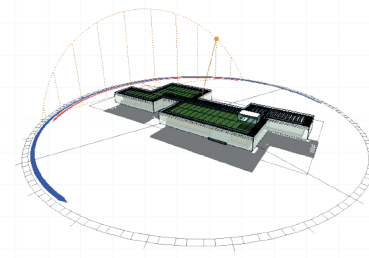
The project starts from the global understanding of the concept of sustainable development, seeking a proposal that is not only ecologically correct, but also concerned with economic, social and cultural factors. A project like this should point out paths where architecture should go to become more aware of its impacts, reaching the desired sustainability. The biggest paradigm to be changed is to understand the constructions not as artifacts that only consume energy, but also producers. In this way, the building is understood as an ecosystem that produces part of what it consumes and can still supply external demands.

Therefore, it was sought to reconcile two postures regarding sustainability: the use of cutting-edge construction technologies and techniques, since the building will function as a display of such technologies; and passive resources, values inherent to architecture.

The project basically consists of four elements: a metallic modulated structure (7.5 m x 7.5 m), for the easy construction, rationalization and recycling possibility; a cover that alternates precast sheds that receive photovoltaic plates and allow indirect lighting of internal spaces, in addition to a green surface that captures water and reduces transmittance thermal; a metallic skin away from the cover projection that covers its entire perimeter, protecting it from direct sunlight, allowing cross ventilation and creating a layer of air isolating the interior of the building; and the micro units of the program, prefabricated self-supporting boxes that vary their finish between pine wood and glass, sometimes opaque, sometimes translucent, depending of the function they harbor.

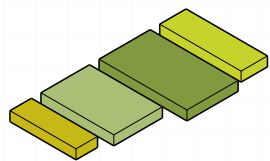


insolation
summer

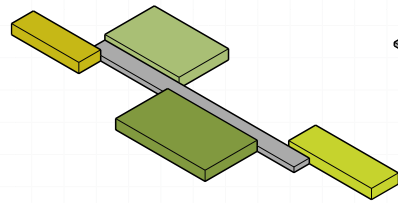


insolation
winter

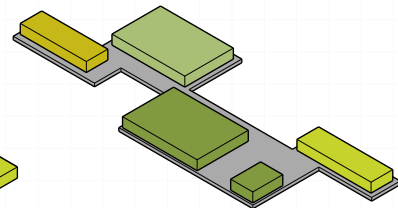




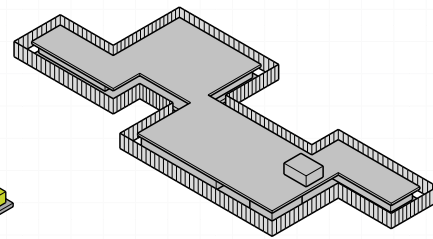
program



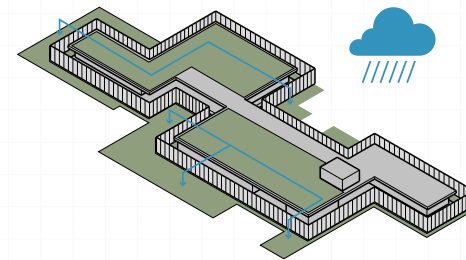
linear distribution



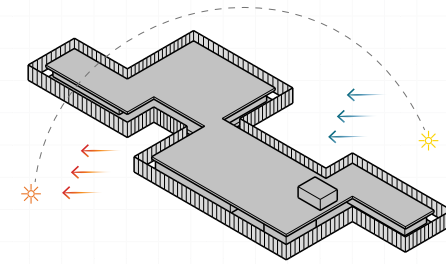
organization on slab



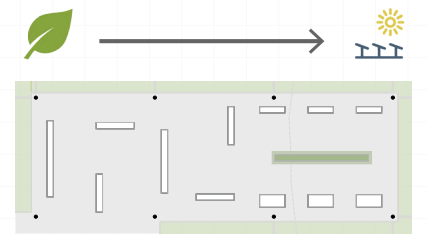
final form



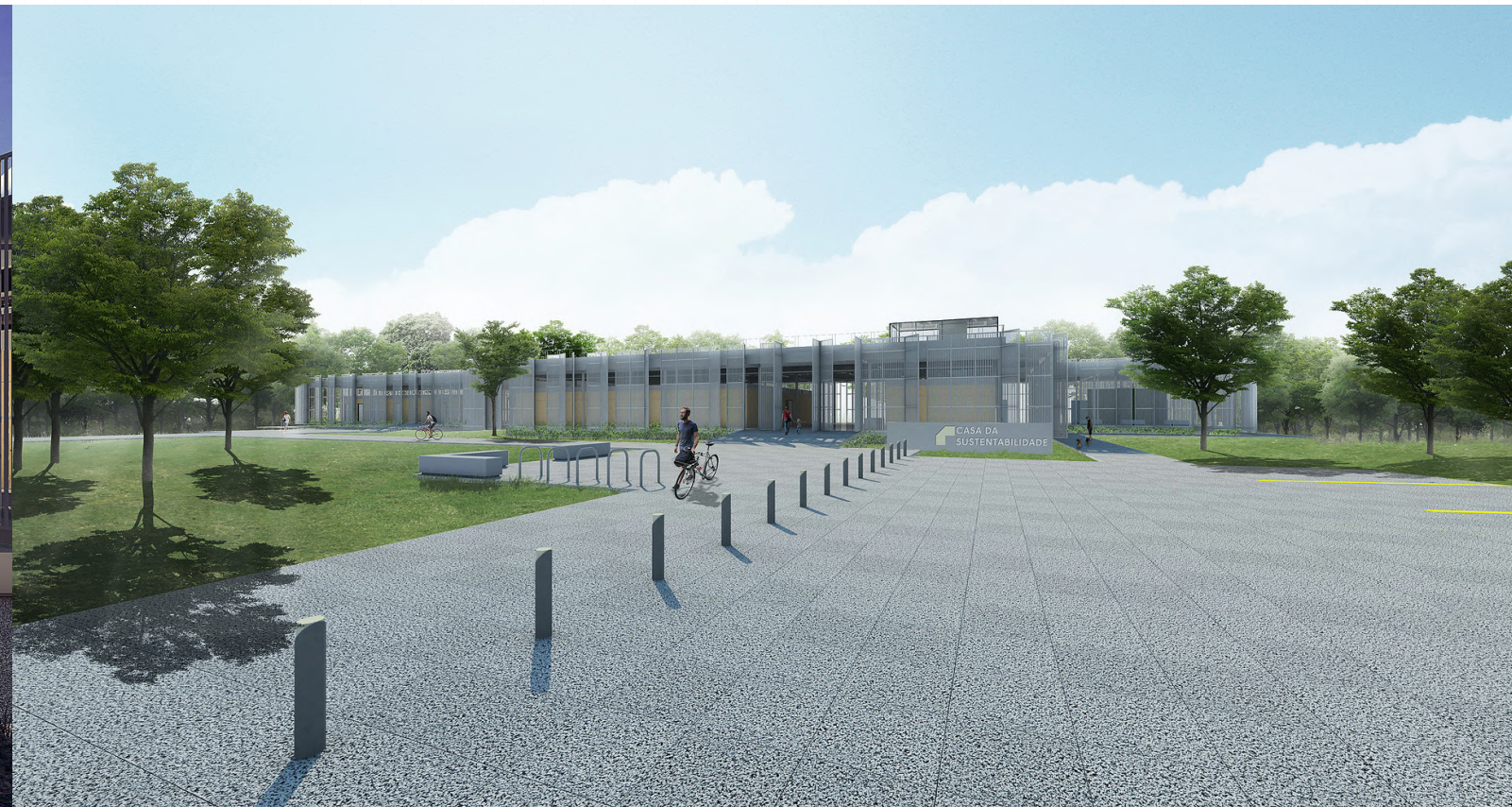
rainwater and gardens



insolation and
ventilation



exhibition area



bar cart Rondon

furnitue design

YEAR: 2020
LOCATION: Fortaleza, Brazil
TYPE: Collaborative work / freelancer

Project developed with Yuka Ogawa
autocad, sketchup

CONTRIBUTION: concept, 3d modeling, articulation with suppliers

The furniture arose from the client's desire to reuse an old granite top that was broken. The stone was split into smaller furniture - such as corner table tops and decorative boards - and part was separated to be used in a bar cart, resulting in the bar cart Rondon.

We use mixed carbon and stainless steel, according to the material residues mined in the Naval Industry, as well as the wheels and the shelf in solid wood scraps; the finishing was in polyurethane paint on the metals, sanding on the sides of the wheels, to provide friction with the floor, and varnish on the shelf.



chalets for community tourism

Maquinar competition

YEAR: 2018
LOCATION: Cumbe, Brazil
TYPE: Collaborative work / group competition

Project developed with Gabriela Marques and Igor Gonçalves
archicad, v-ray, photoshop, indesign, illustrator

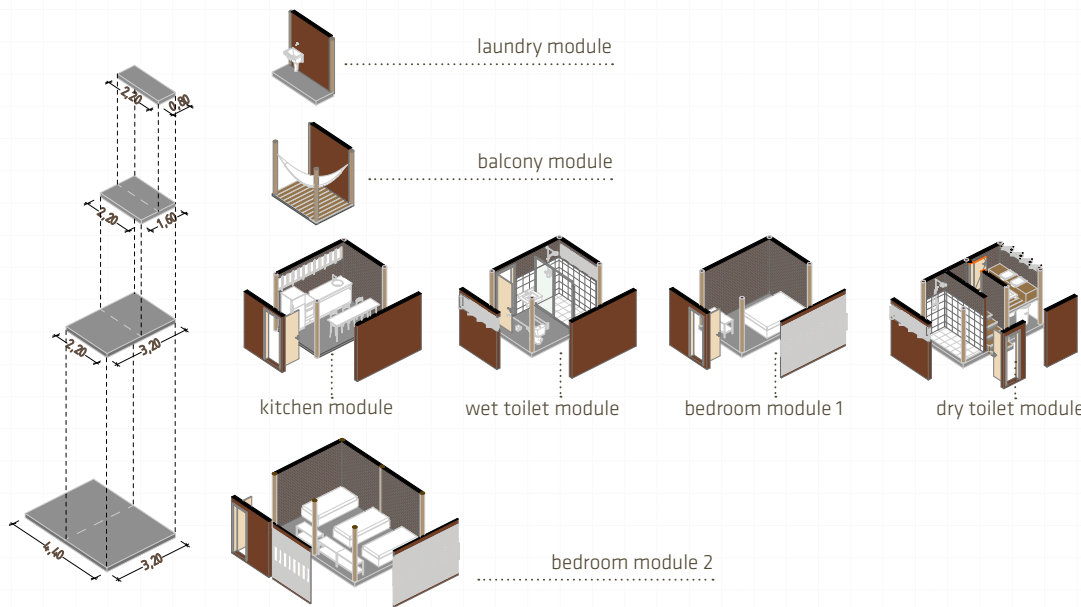
CONTRIBUTION: concept, 3d modeling, renders (images),
graphic design, schemes (construction site and modules)

The project is located in Cumbe, a traditional community of quilombola descent, in the Northeast of Brazil, formed by approximately 150 families, mostly fishermen, artisans and farmers, who live on the banks of the Jaguaribe River.

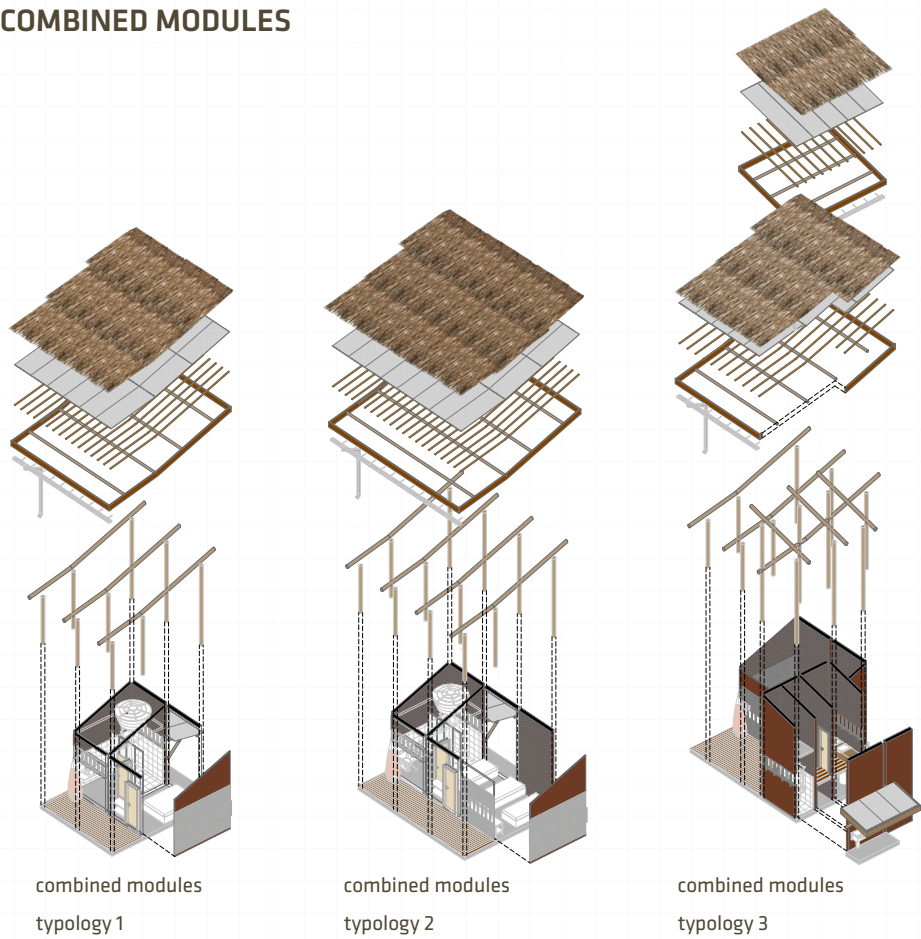
Recognizing the local demand and the profile of integration of the community with the natural environment, the project aimed to promote an alternative accommodation for community tourism. Thus, it was intended not only to discuss problems, but also to propose alternatives in a participatory and democratic way, building structures that permeate the physical environment of Architecture and provide community strengthening.

MODULES

The program was thought as independent modules (bedrooms, toilets - dry and wet, balcony, laundry and kitchen) which can be combined in different types, in order to better meet the characteristics of each terrain, with the continuous interconnection among design, construction and use.



COMBINED MODULES



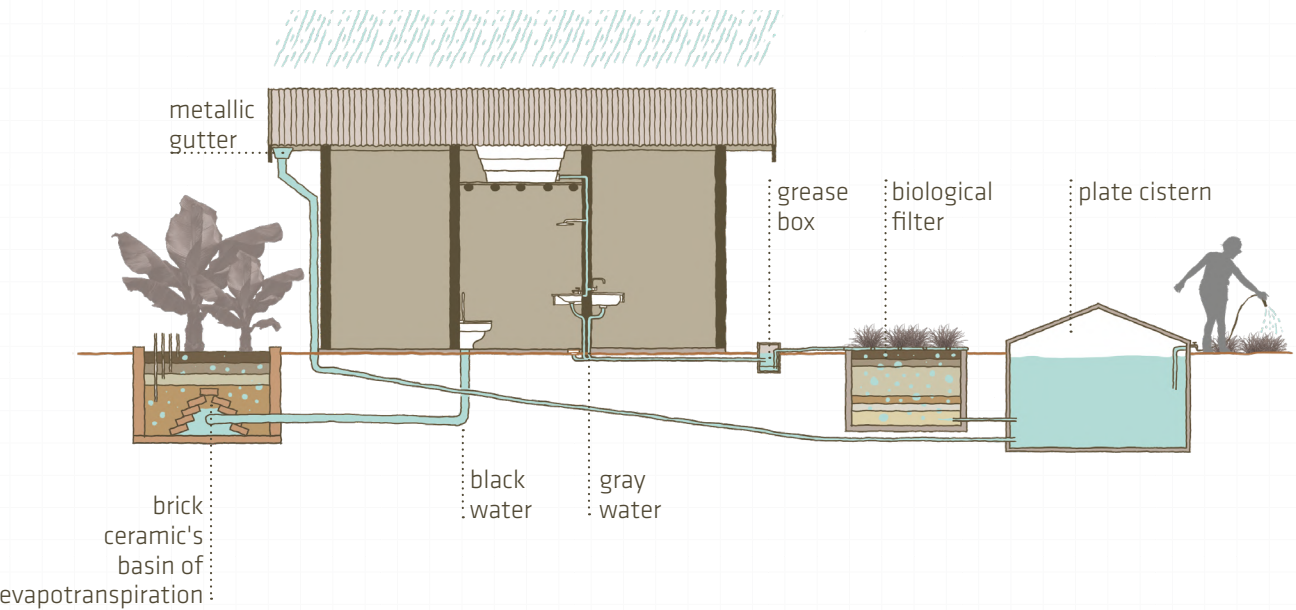
CONSTRUCTION SITE

The concept of the project led as to use materials with less environmental impact, cheaper, easily available on site and that allow greater thermal comfort on the building. The chalets for community tourism were proposed as an open system for experimentation and personal appropriation of the space, since the construction.

WATER USE

An important issue in Cumbe is the high value of piped water. Thus, the project has as one of the main guidelines to provide water use and greater financial savings, being a way for the visitor to have an experience with less environmental impact.

The purpose of the technologies used is to make it possible that all the water used in the accommodation unit is not discarded but reused.



DETAIL

carneuba, banana or coconut palm straw
ecological tile made with tetrapak
massaranduba rafters 3 x 5 cm
eucalyptus log rafters 10 - 12 cm
adobe brick wall (30 x 15 x 10 cm)

massaranduba beam

massaranduba pieces for the window panel
(2 x 15 cm boards and 3 x 3 cm amount)

carneuba stalks aligned and fixed on
the support boards

BALCONY

ROOM

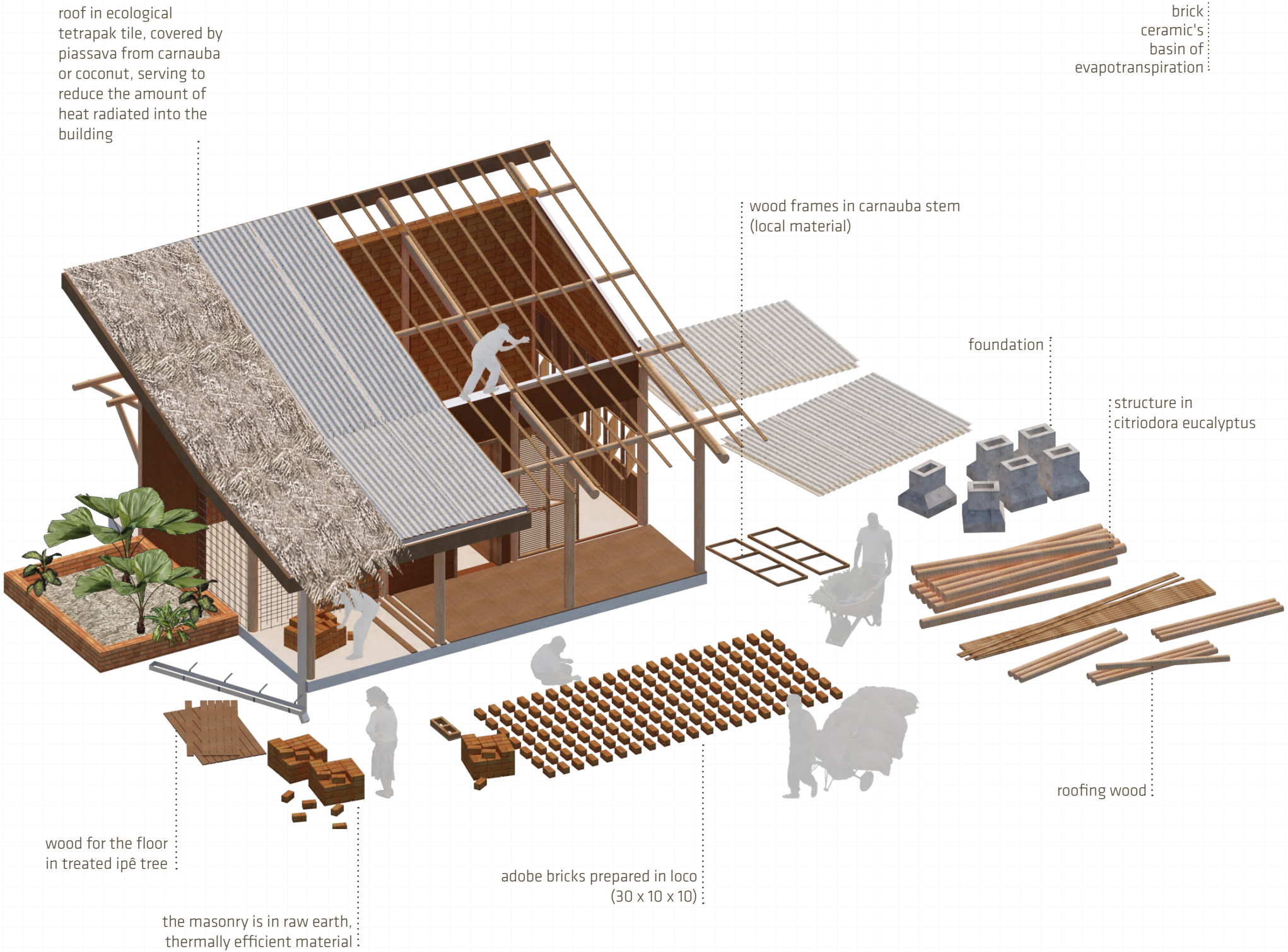
muracaitirara wooden deck flooring

concrete baseboard

burnt cement floor

concrete slab

concrete foundation



bike parking installation manual

for Fortaleza's City Hall, Bloomberg Philanthropies and Vital Strategies.

YEAR: 2019
LOCATION: Fortaleza, Brazil
TYPE: Collaborative work / freelancer

Project developed with Yuka Ogawa
photoshop, indesign, illustrator

CONTRIBUTION: concept and graphic design

The graphic design project for the Bike Parking Installation Manual was a demand presented by the City Hall of Fortaleza, sponsored by the international institutions *Bloomberg Philanthropies* and *Vital Strategies*.

Over the past seven years, Fortaleza has reshaped their streets to prioritize people cycling, walking, rolling, staying. Currently, the city has a total of 317.3 km of bike lanes and its residents show more and more enthusiasm in adopting this new mode of transportation, something revolutionary in the history of the city.

Taking this into account, the purpose of the brochure was to encourage and instruct local citizens on why and how to install bike parkings on streets and sidewalks in a safer, more appropriate and easier way.

The graphic design project had as guidelines the use of the official colors of the City Hall combined with a young and playful language, using architectural drawings to better illustrate the installation step by step and the various types of this urban equipment.

link to access: https://mobilidade.fortaleza.ce.gov.br/images/pdf/Pequeno_Manual_dos_Paraciclos_versao_online.pdf



house on 18th street

interior design

YEAR: 2019
LOCATION: Fortaleza, Brazil
TYPE: Collaborative work / freelancer

Project developed with Yuka Ogawa
archicad, sketchup, v-ray, photoshop

CONTRIBUTION: concept, 3d modeling, renders (images),
graphic design, sections

The project developed is a renovation of the social area of a house located in the city of Fortaleza, Brazil.

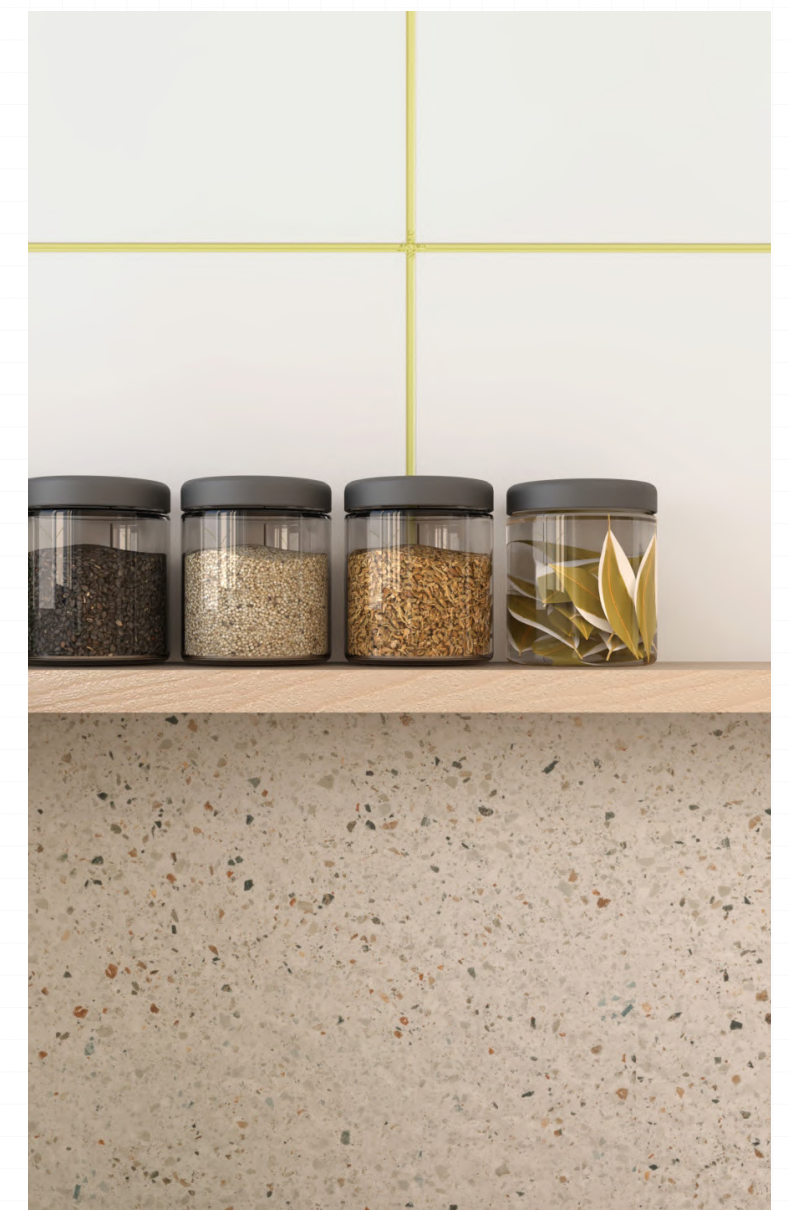
Under the demand for more cabinets and lighting, we seek to integrate the living room, the dining room and the kitchen through a furniture that develops itself in the extension of these areas.

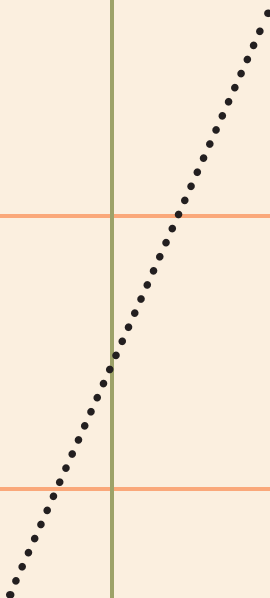
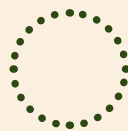
The wooden bookcase, which also serves for the exhibition of objects, plants and TV support in the living room, becomes a cupboard for the dining room, unfolds into a bench and finally becomes a partition and shelf that separate the kitchen.

In the dining room, we chose to increase the existing opening and completely remove the wall, creating a frame for the door and the cabinet under the beam, in order to increase ventilation and natural light.

The existing kitchen is very small and it was necessary to make it as compatible as possible, creating cabinets and shelves, taking advantage of the existing countertop and sink, in addition to maintaining the wall covering, changing only the grout to a shade of green that spoke to the strip of color on the wall, which integrates the living room, dining room and conservatory.







academic experience



prelude: the map, the eye, the urbis

intervention and archeology

COURSE: Graduation Project
SCHOOL: UFC
ADVISOR: Prof. Dr. Renato Pequeno
YEAR: 2018
LOCATION: Iara, Brazil

archicad, photoshop, indesign. illustrator

The study of cartography, desires, processes, cities and traditional knowledge, led me to a small district in the Brazilian semiarid, which, like other villages of the same scale, has been showing a decline in the number of inhabitants in the last decade.

The theme of this work covers a circuit of architectural and urbanistic interventions in a small town on the border between Ceará and Paraíba states, called Iara. Investigating demands and rescuing potentialities, it was possible to work exploring the macro and micro scale of the territory. The design process made me not only an architect, but also a researcher, by producing unprecedented cartographic data and visiting the homes of families in the district with a keen eye for retelling the city's history through the stories of local residents and their photo albums.

The research resulted in a circuit of interventions that included the restoration of an old public butchery to be transformed into a cultural and artistic center, the urbanization project on the border of the city's intermittent lake, which includes a pier and other leisure facilities, an amphitheater with an outdoor cinema equipment, the restoration of an old wood market, through construction interventions and the rescue of local fairs and festivities, and the implementation of technologies to mediate the lack of water arising from the problem of the drought. This work is intended to be a prelude, a first gesture towards a future in which this village, its history and knowledge, still resist.

Keywords: semiarid; research; macro and micro scale architecture; cartography; cities that disappear.

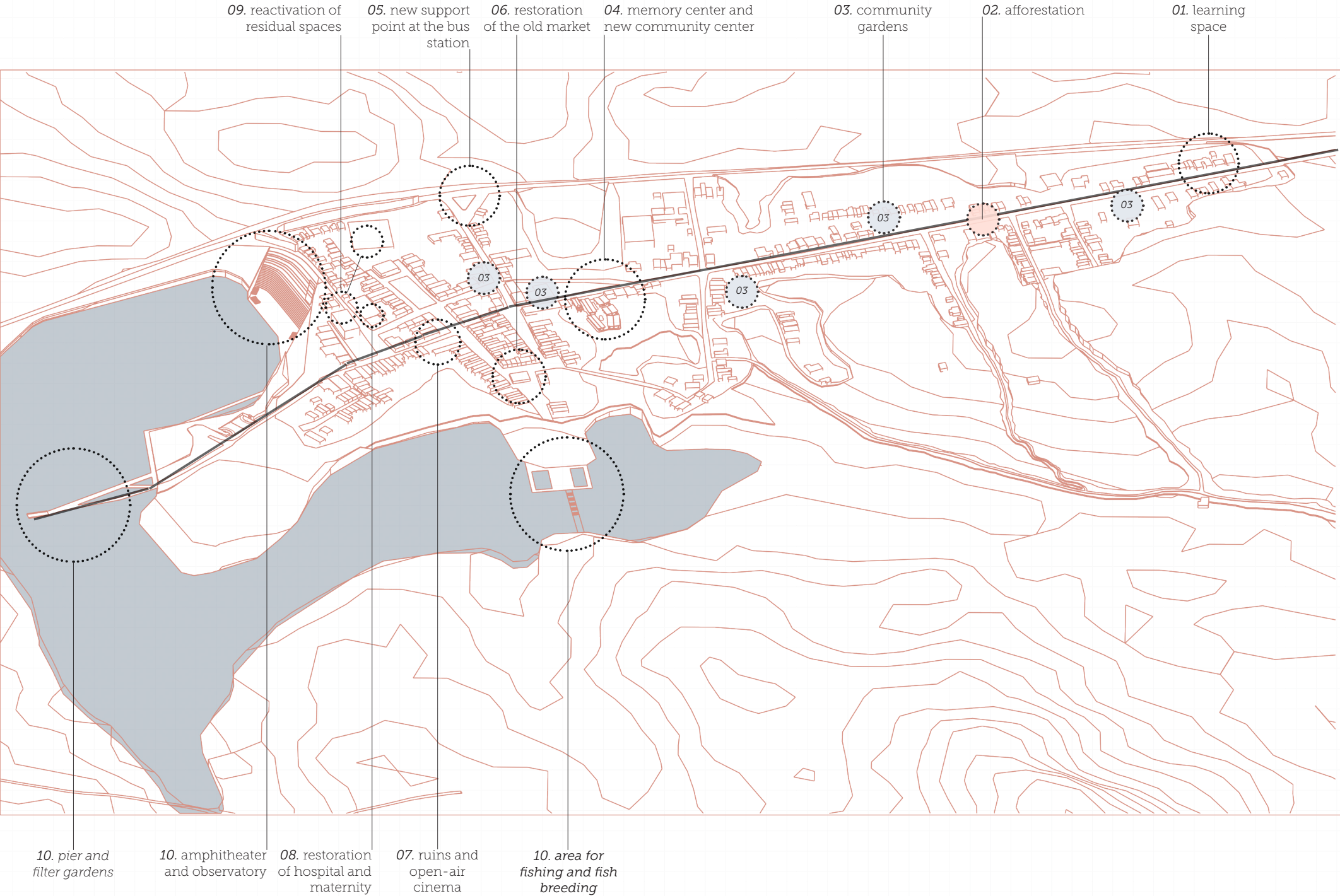
printed book and presentation day



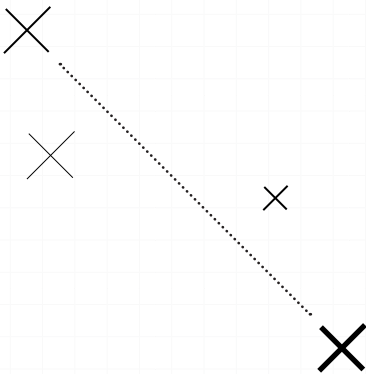
tracing elements

A circuit of interventions along the backbone of Iara is proposed, which addresses the various scales in concept and detail. The linearity pointed out refers to the old road that connected Rio Grande do Norte state to Paraíba state and Cariri region. The study covers Iara from one end to the other, from the old cheese factory to the remains of the old road, now located within the perimeter of the weir.

The final work was materialized in a book of 204 pages, containing the theoretical and historical research, the new cartographies produced and the architectural and urban interventions. The following is the next pages is a sample of the main interventions.



typologies found on site



n° 04 /

memory center and new community center

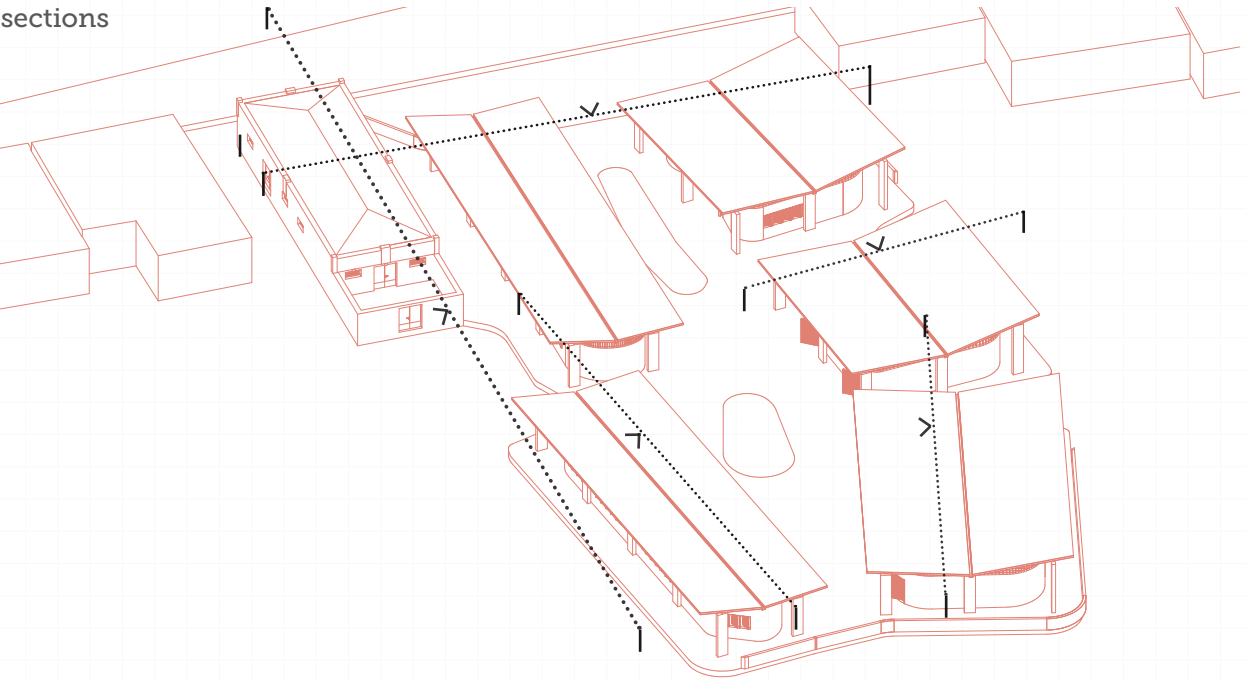
One of the local demands, brought by the residents' association, was a memory center and a community center. Thus, I proposed:

- 1) the renovation of the old butchery shop, a building from the 1950s, provided by the City Hall, in order to transform it in a memory center, with space for exhibitions;
- 2) the creation of a community center to be inserted in the land attached to the butchery shop.

The location is strategic, as it constitutes a connexion between the historic urban center and the modern houses. As a project strategy, I chose to implement fluid blocks, which condense different activities and invite the occupant to walk. Solutions such as the use of adobe brick (already adopted in the village) and the choice for the elevated roof (which provides shading and cooling) were also used.



sections



- 01 - library (77 m²)
- 02 - board room (46,97 m²)
- 03 - management's bathroom (7 m²)
- 04 - management's deposit (7,70 m²)
- 05 - general deposit (14,20 m²)
- 06 - patio
- 07 - auditorium (115 m²)
- 08 - body expression room (40 m²)
- 09 - music and singing room (20,15 m²)
- 10 - group study room (17,15 m²)
- 11 - practical classroom (27 m²)
(woodwork, sewing, ceramics)
- 12 - women's bathroom (12,70 m²)
- 13 - men's bathroom (13 m²)
- 14 - communal kitchen (20 m²)
- 15 - exhibition area (63 m²)
- 16 - warehouse (18 m²)
- 17 - garden (21 m²)

intervention plan



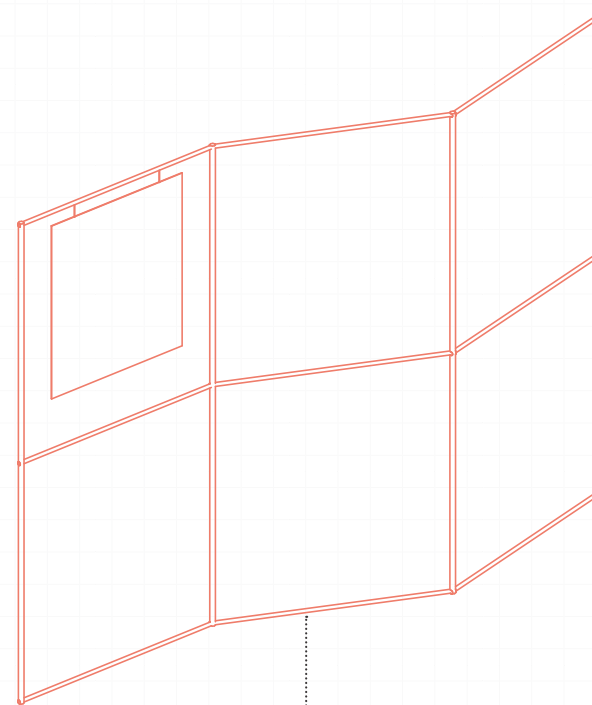


proposition of wooden display with adaptable height and attached to the wall



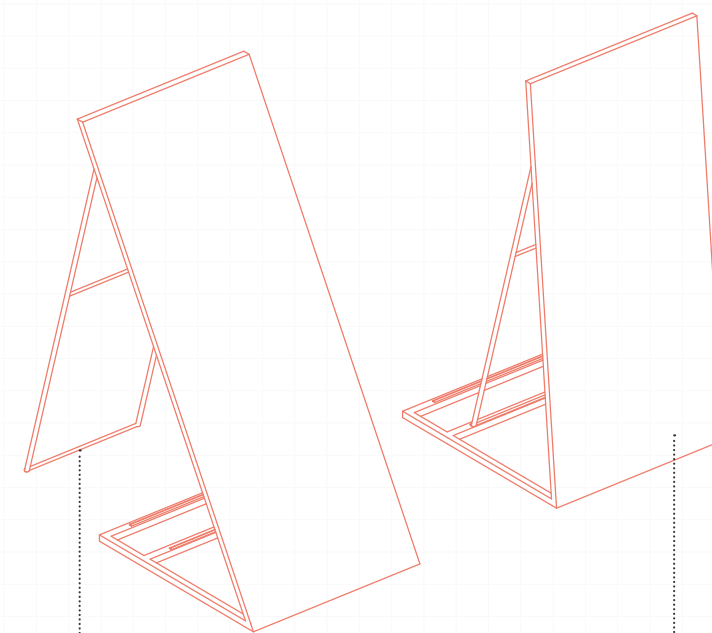
memory center

proposal of rebar screen, working as an exhibitor



rebar

proposition of retractable display in wood and rebar

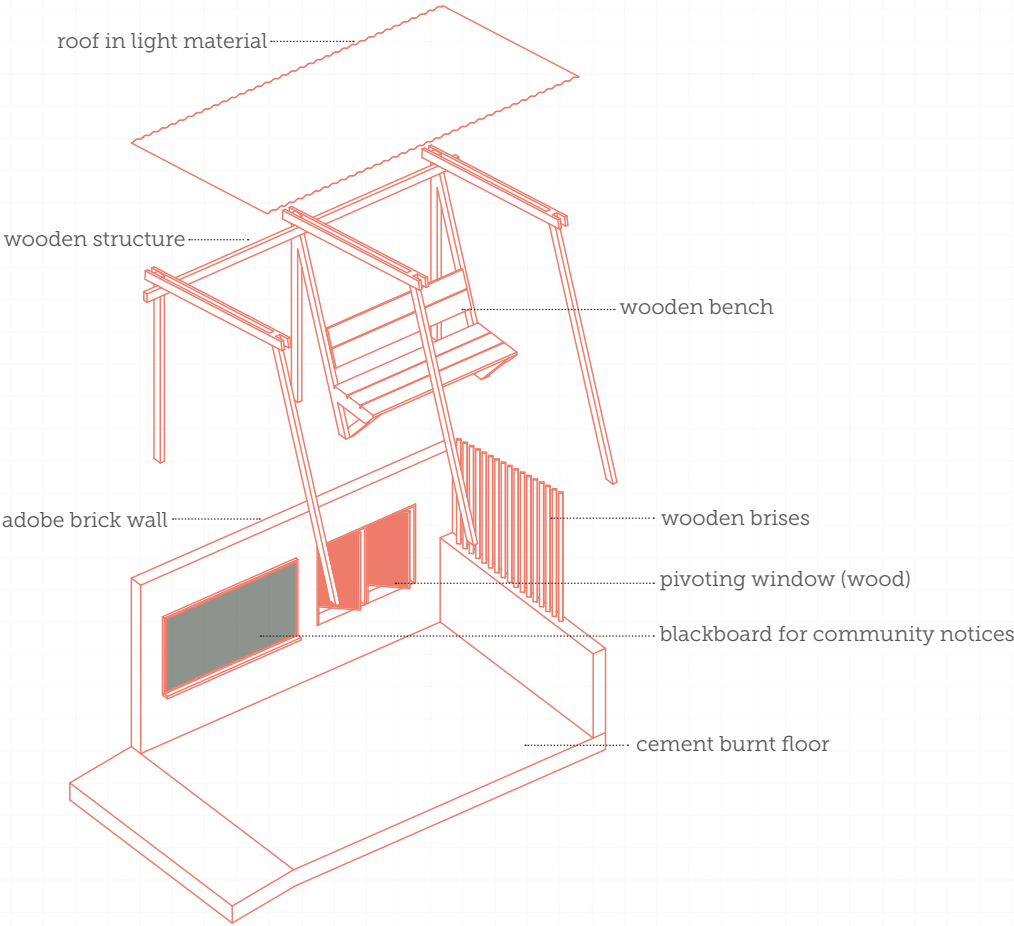


structure rebar

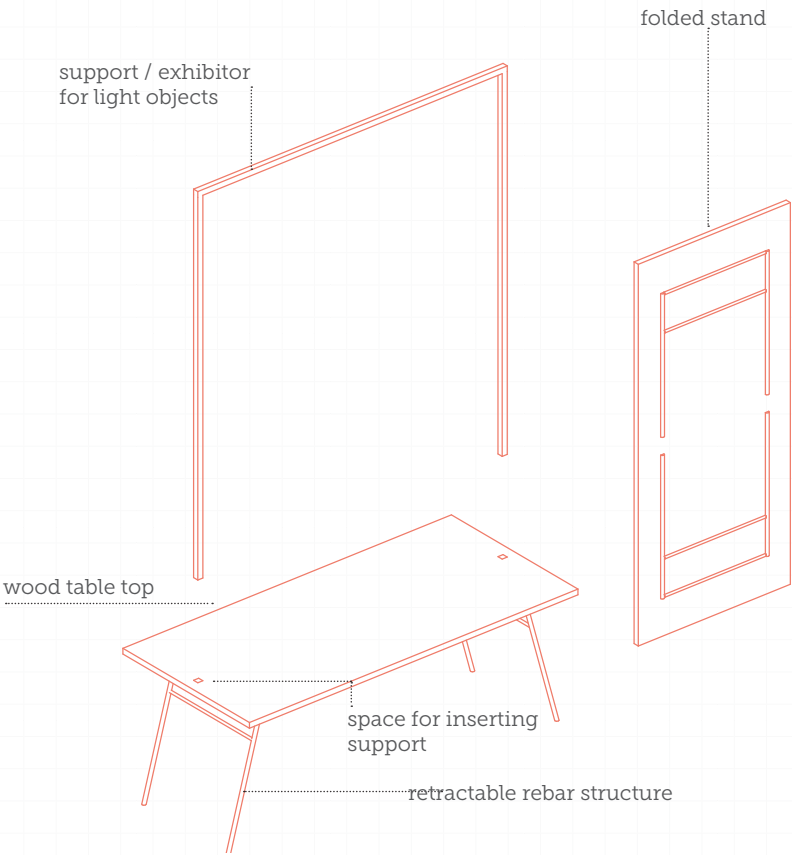
wood



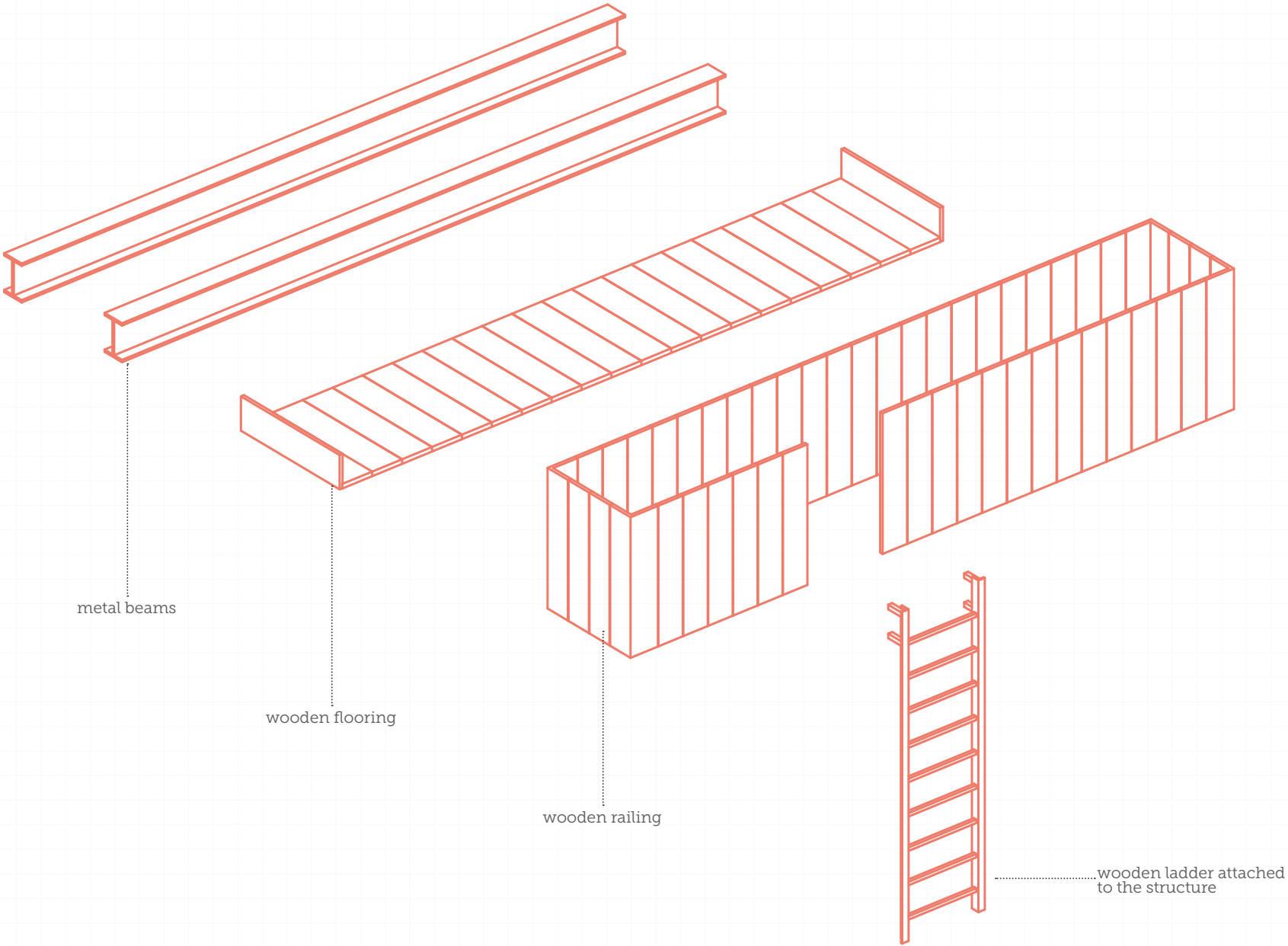
n° 05 /
new support point at the bus station



n° 06 /
restoration of the old market -
proposition of display table for the reactivation of the public
traditional fair

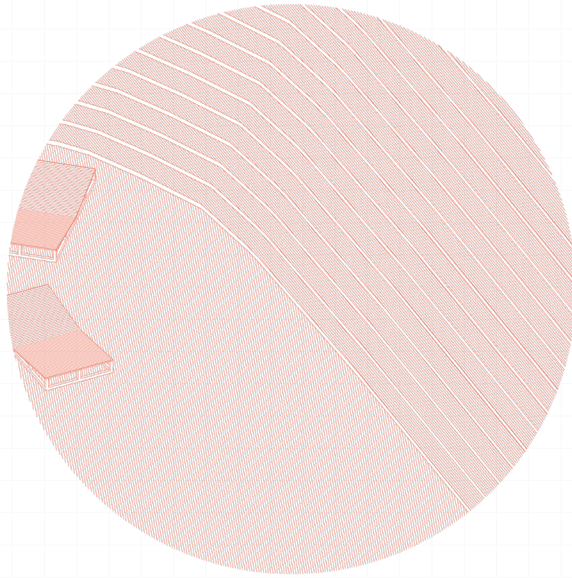


n° 07 /
ruins and open-air cinema -
observatory structure in wood and metal
beams to be coupled to the structural walls
of the ruins

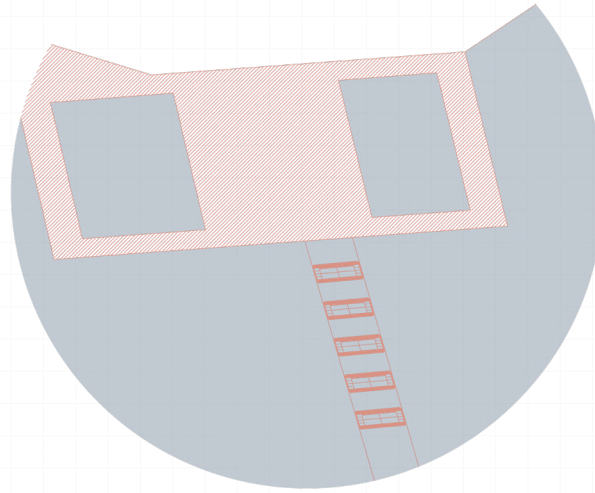


n° 10 /

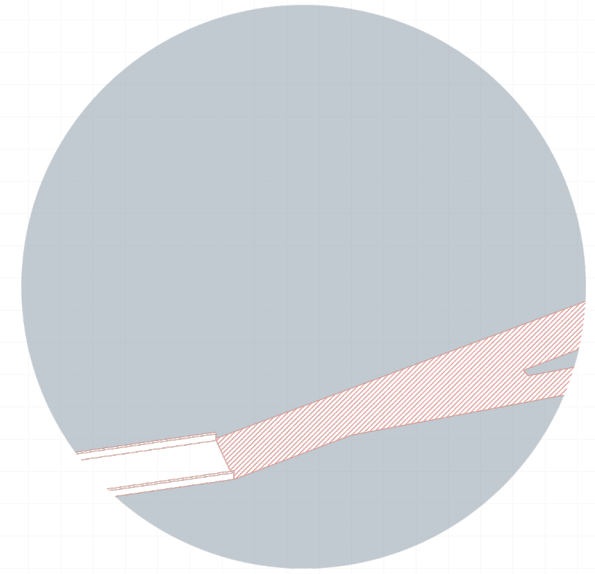
urbanization of the village water
reservoir margins



amphitheater and
observatory

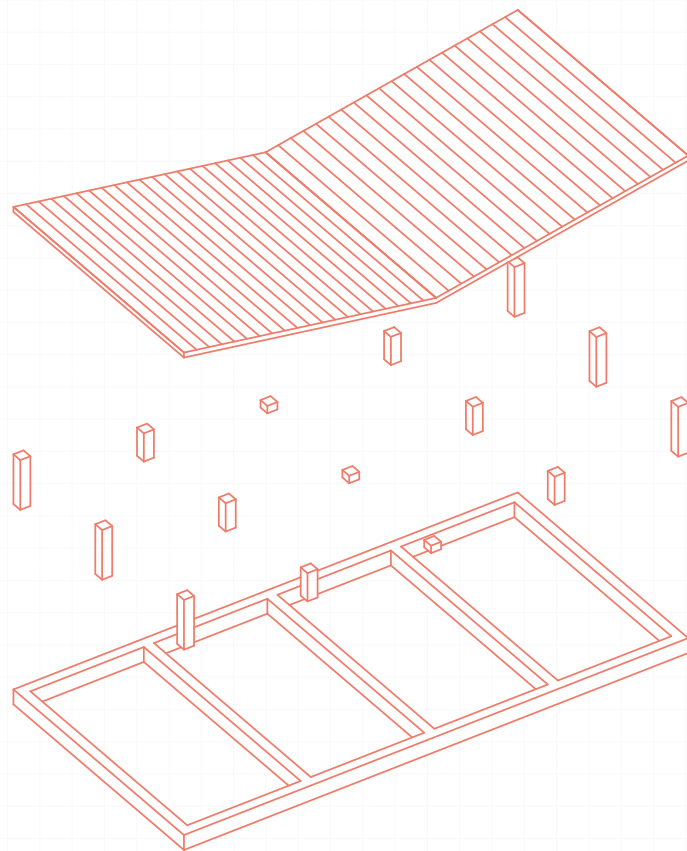


area for fishing and
fish breeding

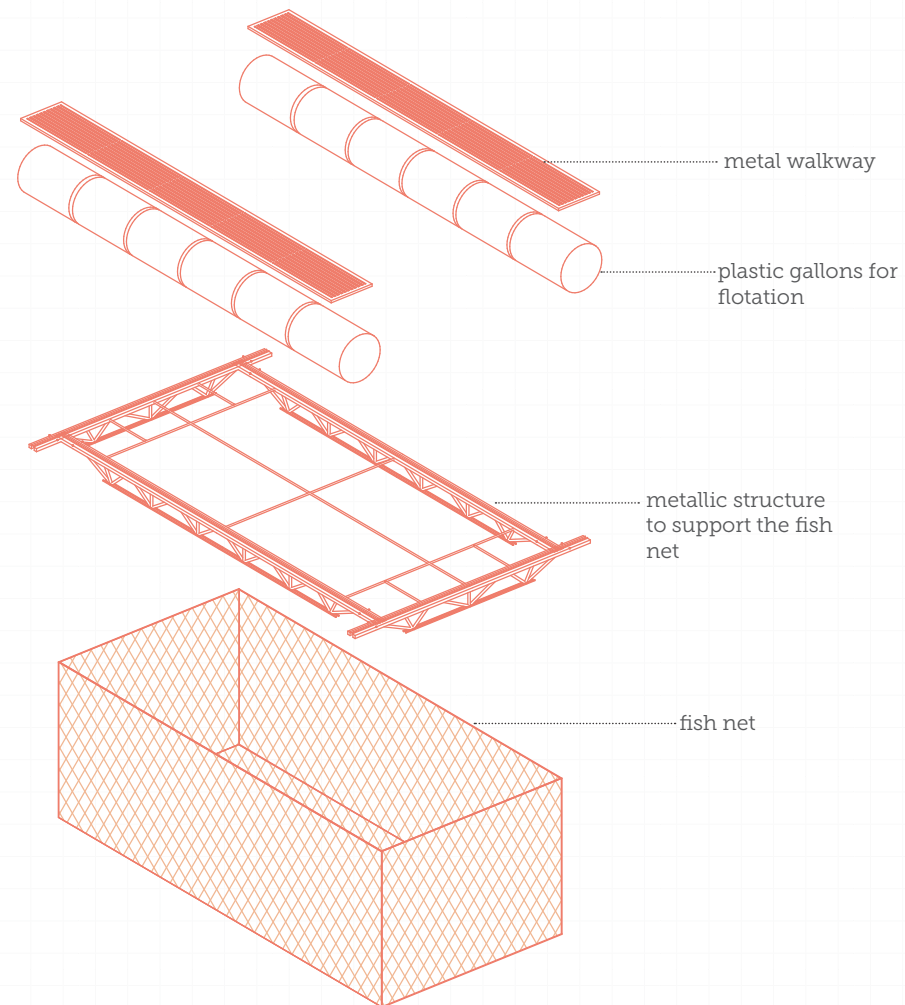


pier and
filter
gardens

ramp structured
in wood



floating structure proposed
for the fish breeding



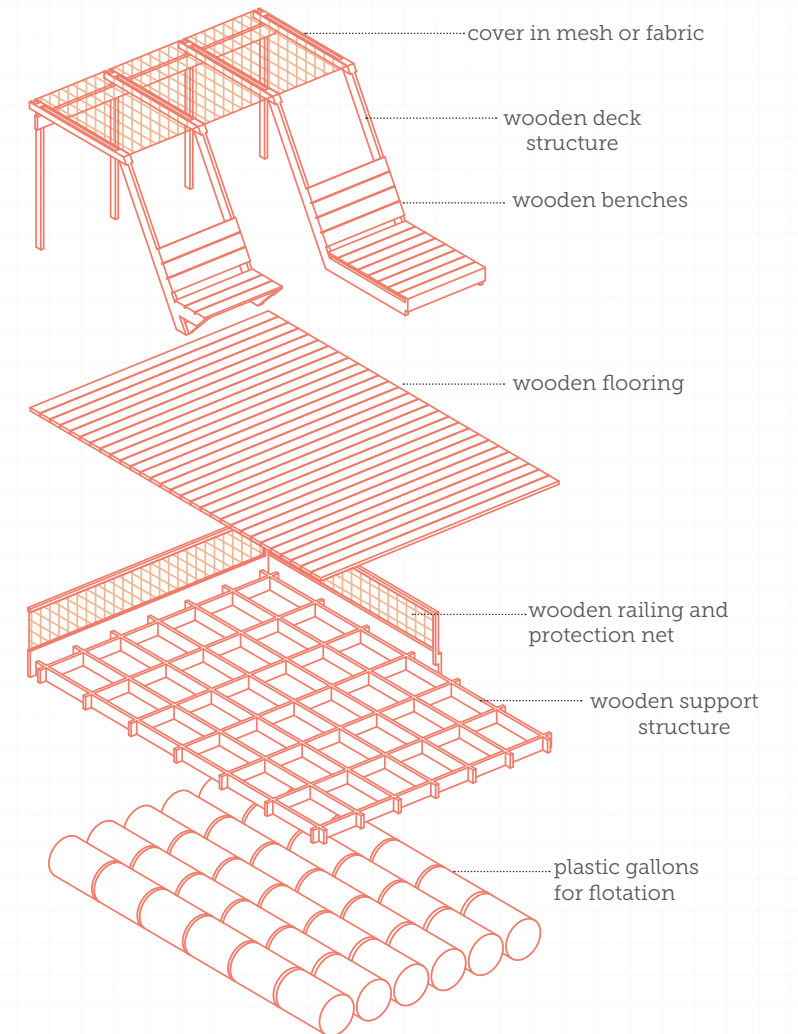
metal walkway

plastic gallons for
flotation

metallic structure
to support the fish
net

fish net

floating leisure structure
proposed for the reservoir



cover in mesh or fabric

wooden deck
structure

wooden benches

wooden flooring

wooden railing and
protection net

wooden support
structure

plastic gallons
for flotation

parckfarm - afterlife

workshop in Brussels

ADVISOR: Petra Pferdmenges
(from <http://www.alivearchitecture.eu/index.php/>)
& Christopher Paesbrughe

YEAR: 2014

LOCATION: Brussels, Belgium

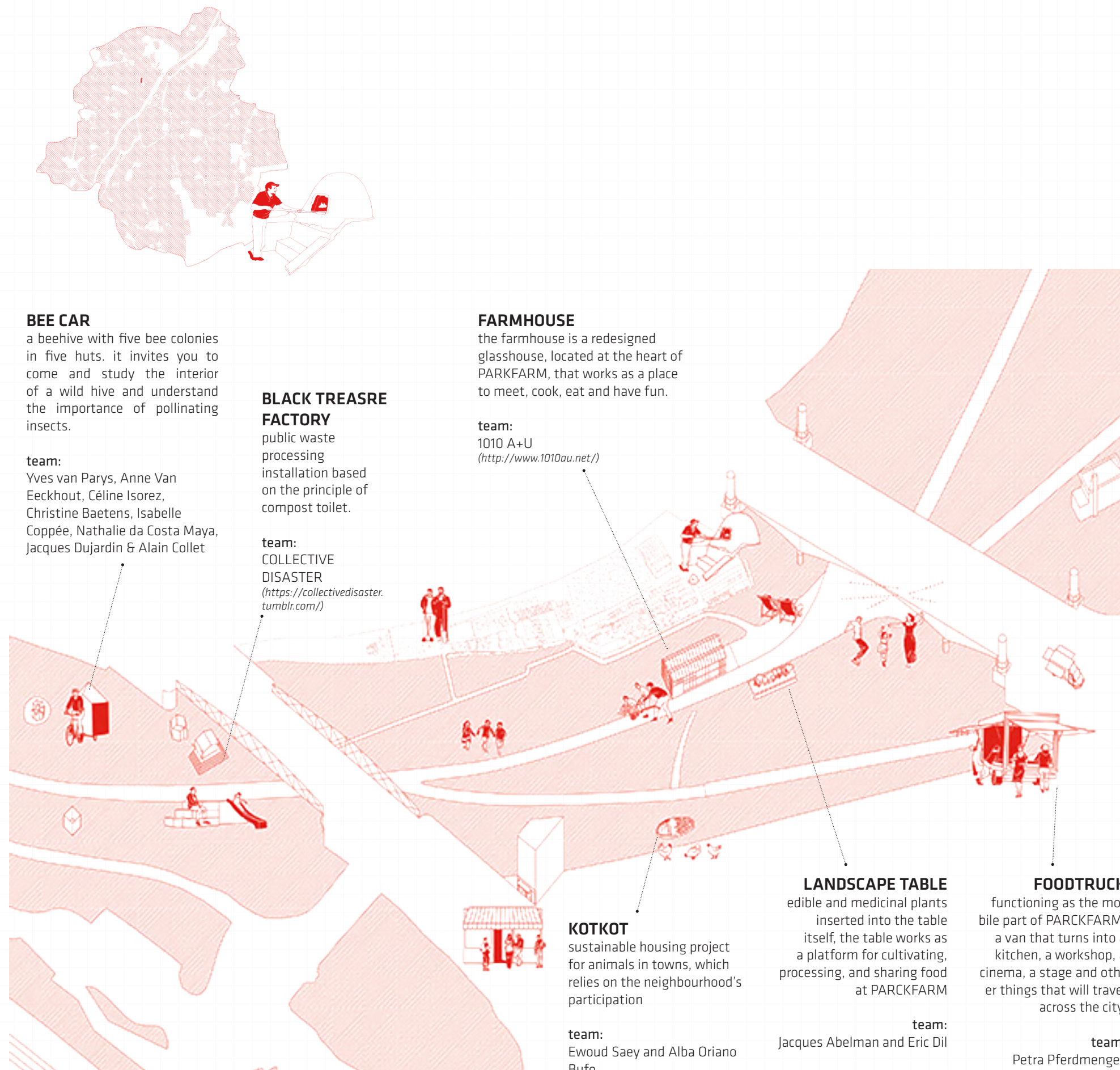
CONTRIBUTION: besides reflecting on the topics covered in the workshop (collages-postcards and text formats) in this workshop I helped to lay the floor of the main pavilion.

The workshop “ParckFarm - Afterlife” was an activity within the framework of the festival Parckdesign 2014 (*From the landscape to the plate - a design festival celebrating kitchen garden*) that took place at the Bhyrr former factories site, in Brussels. The interventions were situated on an old railroad valley, between Laeken and Molenbeek neighborhoods's border, and crossed by three old bridges, monuments of a post-industrial landscape.

The city festival about public green space was initiated by the Brussels Institute for Environmental Management and curated by the architect bureaus Taktyk & Alivearchitecture and a couple of artists. It tested a new model of public space that combined characteristics of a park with the notion of urban agriculture. It invited visitors to discover a new park typology through art installations, debates, film projections, concerts, agricultural performances, etc.

In the workshop we explored the vision upon how a temporary urban farm could have a sustainable impact beyond the festival and upon the larger urban development of the long-abandoned Tour & Taxis industrial site. The first part of the activity lasted a week and included guided tours and explanations about the history of the place, the project and the functioning of the collective gardens. Thus, our time was divided between activities held partly in the historical building of Bhyrr, partly on the site and partly in the existing vegetable garden.

In addition to the development of communication tools as a mean to address multiple actors (local inhabitants, city planners, politicians ...), after the official week of the workshop, I also participated in the construction of the Farmhouse intervention, previously proposed by the coordinating architects.



BEE CAR

a beehive with five bee colonies in five huts. it invites you to come and study the interior of a wild hive and understand the importance of pollinating insects.

team:
Yves van Parys, Anne Van Eeckhout, Céline Isorez, Christine Baetens, Isabelle Coppée, Nathalie da Costa Maya, Jacques Dujardin & Alain Collet

BLACK TREASURE FACTORY

public waste processing installation based on the principle of compost toilet.

team:
COLLECTIVE DISASTER
(<https://collectivedisaster.tumblr.com/>)

FARMHOUSE

the farmhouse is a redesigned glasshouse, located at the heart of PARKFARM, that works as a place to meet, cook, eat and have fun.

team:
1010 A+U
(<http://www.1010au.net/>)

KOTKOT

sustainable housing project for animals in towns, which relies on the neighbourhood's participation

team:
Ewoud Saey and Alba Oriano Bufo

LANDSCAPE TABLE

edible and medicinal plants inserted into the table itself, the table works as a platform for cultivating, processing, and sharing food at PARCKFARM

team:
Jacques Abelman and Eric Dil

FOODTRUCK

functioning as the mobile part of PARCKFARM, a van that turns into a kitchen, a workshop, a cinema, a stage and other things that will travel across the city.

team:
Petra Pferdmenges

Drawings by © Petra Pferdmenges
(In: <http://www.alivearchitecture.eu/index.php?/urban-margins/2014-parckfarm---farmparck/>)

site as found (before)



after



© TAKTYK

process (while)



Feliz Valentin, me and Christina Elia
on site, working on the construction of
the Farmhouse, a lot of tiles later :)



© 1010 AU



© TAKTYK



© TAKTYK



© 1010 AU

social housing

multifamily residential building

COURSE: Architecture Studio 3
SCHOOL: UFC
ADVISOR: Prof. Me. Bruno Braga
YEAR: 2013
LOCATION: Fortaleza, Brazil
EXHIBITION: EXPO 2013 (UFC)

archicad, autocad, sketchup, v-ray, photoshop, illustrator

The task was to propose a social housing complex, with 600 units, in an area of six hectares on the periphery of Fortaleza, discussing new possibilities on this subject, proposing solutions to problems ranging from the typology to the form of construction and the chosen materials.

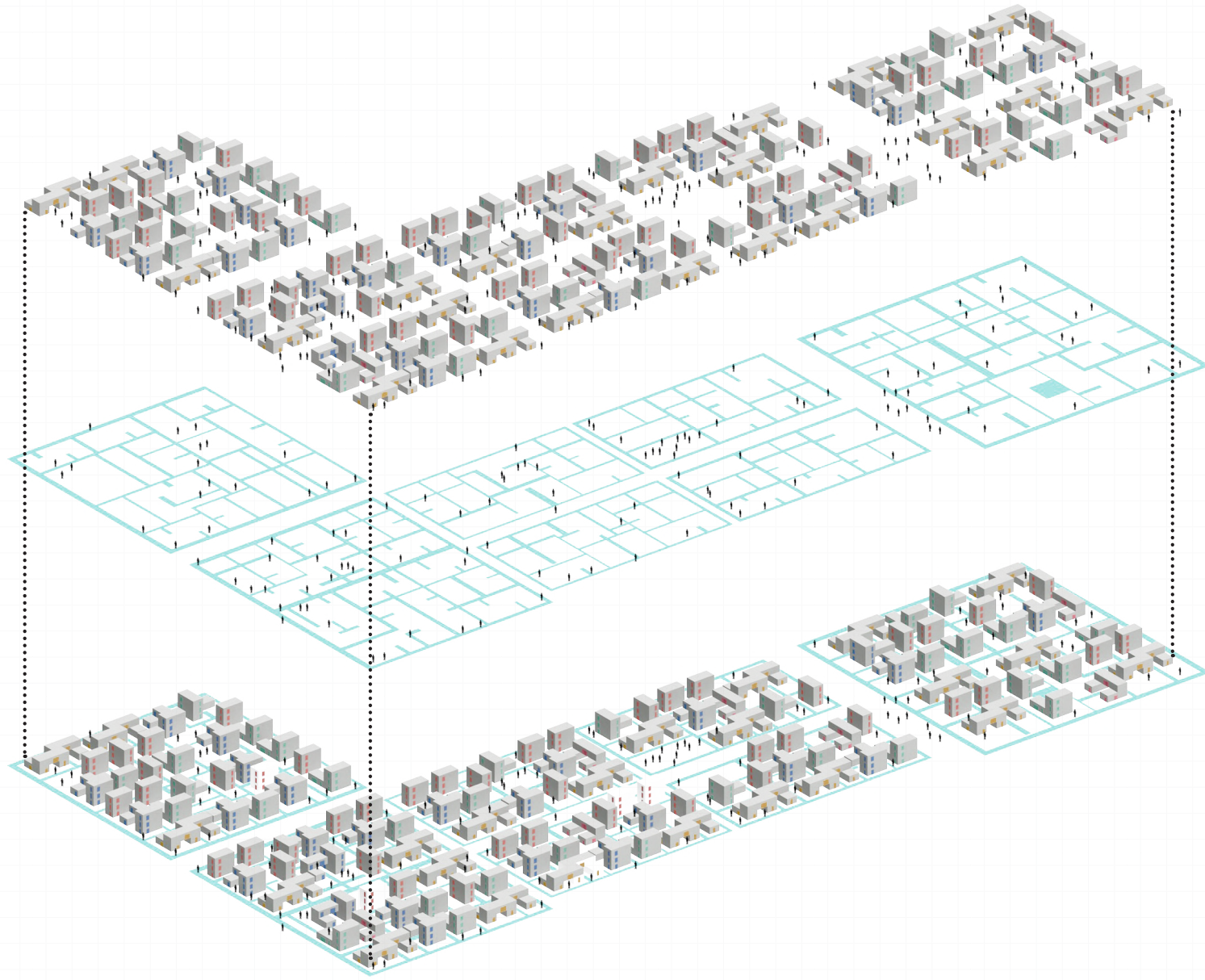
In the 21st century, the problem of housing deficit in Brazil remains as one of the main urban problems. There are millions of people living in an irregular situation and with conditions that barely guarantee quality of life. As a way of minimizing (but not really solving) the issue, the Brazilian government encouraged professionals in the field of construction, architects and engineers, to develop solutions that modify this scenario.

As a premise of this project, I tried to identify the symbols, norms, values and types of relationships that existed between the houses already implanted in the place with the surroundings, predominantly industrial and commercial. Based on the reality found at the site, I developed a proposal that was consistent with the low model of the neighborhood, in order to respect the human scale and allow greater interaction between the residents.

The informality of the surroundings was incorporated into the project, mitigating the social and urban impacts caused by large housing developments. In addition, as an alternative to improve the “cities” of social housing, I prioritized the use of bicycles instead of automobiles. Along the bike paths, I proposed the implementaion of equipments such as courts, an outdoor gym, an amphitheater, children’s play areas, among others. Thus, the space is dynamized and the appropriation of the place by the families that will eventually move there is encouraged, establishing bonds of coexistence and solidarity.



site plan
pedestrian pathways and housing
buildings



Serrinha ecological plaza

participatory project

COURSE: Extension Activity at Canto - Student Office (UFC)
SCHOOL: UFC
ADVISOR: Prof. Dr. Anna Lúcia dos Santos Vieira e Silva
YEAR: 2015
LOCATION: Fortaleza, Brazil

CONTRIBUTION: concept, 3d modeling, renders (images), molde, on site manual work

This project was developed, pro bono, as an activity of Canto - Student Office at UFC and had a duration of one year, with monthly community meetings, workshops and the participation of professors, students, researchers and local residents. Through a participatory project-process, we managed to address water treatment problems, legal aspects of the site and sustainable design strategies to transform a local open-air garbage deposit in a public, suitable for children, space.

In Fortaleza, most of the land informally occupied, specially by precarious dwellings, is located in environmentally fragile areas, such as dunes and near water bodies. To work in this reality, we started with an initial diagnosis, from visiting the site and from conversations with the residents.

Through a multidisciplinary team from different areas, such as landscaping, sanitary engineering, permaculture, environmental engineering and, of course, architects, the project had as guidelines the use of green infrastructure, to deal with flooding and improve water quality and the use of permaculture solutions as an alternative for the treatment of domestic effluents.

site as found (before)



process (while)



(after)

me :)

on site presentation of the project to local residents and the City Hall of Fortaleza (2015)



appropriation of the space and implementation of the playground (2015)



post covid-19 pandemic field visit with further changes made by the community and the city hall (2021)



